

ARG56734 anti-RELM beta antibody (Biotin)

Package: 50 µg
Store at: 4°C

Summary

Product Description	Biotin-conjugated Rabbit Polyclonal antibody recognizes RELM beta
Tested Reactivity	Hu
Tested Application	ELISA, WB
Host	Rabbit
Clonality	Polyclonal
Isotype	IgG
Target Name	RELM beta
Species	Human
Immunogen	E.coli derived Recombinant Human RELMβ. (MQCSLDSVMD KKIKDVLNSL EYSPSPISKK LSCASVKSQG RPSSCPAGMA VTGCACGYGC GSWDVLQLETT CHCQCSVVDW TTARCCHLT)
Conjugation	Biotin
Alternate Names	Cysteine-rich secreted protein FIZZ2; XCP2; FIZZ2; RELM-beta; Cysteine-rich secreted protein A12-alpha-like 1; RELMb; RELMbeta; Colon carcinoma-related gene protein; Resistin-like beta; HXCP2; Colon and small intestine-specific cysteine-rich protein; FIZZ1

Application Instructions

Application table	Application	Dilution
	ELISA	Direct: 0.25 - 1.0 µg/ml Sandwich: 0.25 - 1.0 µg/ml with ARG56620 as a capture antibody
	WB	0.1 - 0.2 µg/ml

Application Note * The dilutions indicate recommended starting dilutions and the optimal dilutions or concentrations should be determined by the scientist.

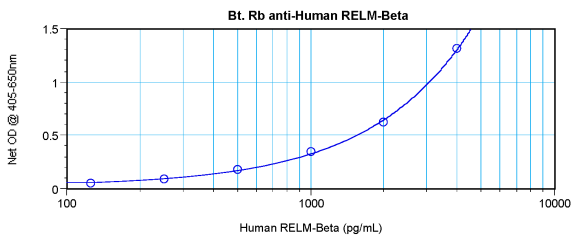
Properties

Form	Liquid
Purification	Purified by affinity chromatography.
Buffer	PBS (pH 7.2)
Concentration	1 mg/ml
Storage instruction	Aliquot and store in the dark at 2-8°C. Keep protected from prolonged exposure to light. Avoid repeated freeze/thaw cycles. Suggest spin the vial prior to opening. The antibody solution should be gently mixed before use.
Note	For laboratory research only, not for drug, diagnostic or other use.

Bioinformatics

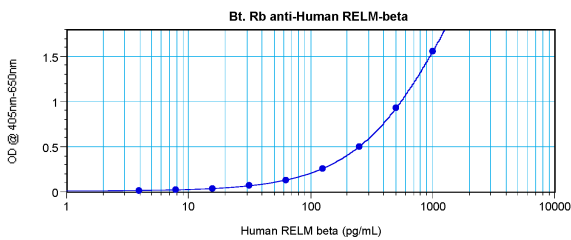
Database links	GeneID: 84666 Human Swiss-port # Q9BQ08 Human
Gene Symbol	RETNLB
Gene Full Name	resistin like beta
Function	Probable hormone. [UniProt]
Calculated Mw	12 kDa

Images



ARG56734 anti-RELM beta antibody (Biotin) standard curve image

Direct ELISA: ARG56734 anti-RELM beta antibody (Biotin) at 0.25 - 1.0 $\mu\text{g/ml}$ results of a typical standard run with optical density.



ARG56734 anti-RELM beta antibody (Biotin) standard curve image

Sandwich ELISA: ARG56734 anti-RELM beta antibody (Biotin) as a detection antibody at 0.25 - 1.0 $\mu\text{g/ml}$ combined with ARG56620 anti-RELM beta antibody as a capture antibody. Results of a typical standard run with optical density.