

ARG56769 anti-IL2 antibody (Biotin)

Package: 50 µg
Store at: 4°C

Summary

Product Description	Biotin-conjugated Rabbit Polyclonal antibody recognizes IL2
Tested Reactivity	Rat
Tested Application	ELISA, WB
Host	Rabbit
Clonality	Polyclonal
Isotype	IgG
Target Name	IL2
Species	Rat
Immunogen	E.coli derived Recombinant Rat IL-2. (MAPTSSPAKE TQQHLEQLLL DLQVLLRGID NYKNLKLPMML LTFKFYLPKQ ATELKHLQCL ENELGALQRV LDLTQSKSFH LEDAGNFISN IRVTVVKLKG SENKFECQFD DEPATVVEFL RRWIAIAQSI ISTM)
Conjugation	Biotin
Alternate Names	TCGF; IL-2; lymphokine; Interleukin-2; Aldesleukin; T-cell growth factor

Application Instructions

Application table	Application	Dilution
	ELISA	Direct: 0.25 - 1.0 µg/ml Sandwich: 0.25 - 1.0 µg/ml with ARG56659 as a capture antibody
	WB	0.1 - 0.2 µg/ml
Application Note	* The dilutions indicate recommended starting dilutions and the optimal dilutions or concentrations should be determined by the scientist.	

Properties

Form	Liquid
Purification	Purified by affinity chromatography.
Buffer	PBS (pH 7.2)
Concentration	1 mg/ml
Storage instruction	Aliquot and store in the dark at 2-8°C. Keep protected from prolonged exposure to light. Avoid repeated freeze/thaw cycles. Suggest spin the vial prior to opening. The antibody solution should be gently mixed before use.
Note	For laboratory research only, not for drug, diagnostic or other use.

Bioinformation

Database links [GeneID: 116562 Rat](#)
[Swiss-port # P17108 Rat](#)

Gene Symbol **IL2**

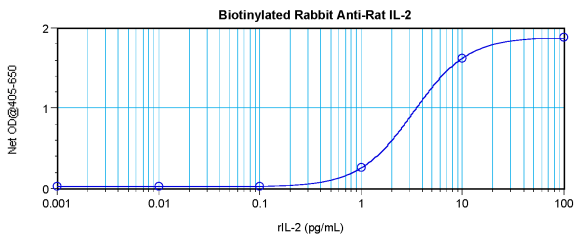
Gene Full Name **interleukin 2**

Background The protein encoded by this gene is a secreted cytokine that is important for the proliferation of T and B lymphocytes. The receptor of this cytokine is a heterotrimeric protein complex whose gamma chain is also shared by interleukin 4 (IL4) and interleukin 7 (IL7). The expression of this gene in mature thymocytes is monoallelic, which represents an unusual regulatory mode for controlling the precise expression of a single gene. The targeted disruption of a similar gene in mice leads to ulcerative colitis-like disease, which suggests an essential role of this gene in the immune response to antigenic stimuli. [provided by RefSeq, Jul 2008]

Function Produced by T-cells in response to antigenic or mitogenic stimulation, this protein is required for T-cell proliferation and other activities crucial to regulation of the immune response. Can stimulate B-cells, monocytes, lymphokine-activated killer cells, natural killer cells, and glioma cells. [UniProt]

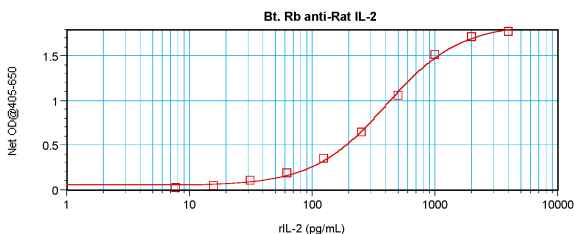
Calculated Mw **18 kDa**

Images



ARG56769 anti-IL2 antibody (Biotin) standard curve image

Direct ELISA: ARG56769 anti-IL2 antibody (Biotin) at 0.25 - 1.0 µg/ml results of a typical standard run with optical density.



ARG56769 anti-IL2 antibody (Biotin) standard curve image

Sandwich ELISA: ARG56769 anti-IL2 antibody (Biotin) as a detection antibody at 0.25 - 1.0 µg/ml combined with ARG56659 anti-IL2 antibody as a capture antibody. Results of a typical standard run with optical density.