

ARG56772 anti-Galectin 1 antibody (Biotin)

Package: 50 µg
Store at: 4°C

Summary

Product Description	Biotin-conjugated Rabbit Polyclonal antibody recognizes Galectin 1
Tested Reactivity	Hu
Tested Application	ELISA, WB
Host	Rabbit
Clonality	Polyclonal
Isotype	IgG
Target Name	Galectin 1
Species	Human
Immunogen	E.coli derived Recombinant Human Galectin 1. (ACGLVASNLN LKPGECRLVR GEVAPDAKSF VLNLGKDSNN LCLHFNPRFN AHGDANTIVC NSKDGGAWGT EQREAVFPFQ PGSVAEVCIT FDQANLTVKL PDGYEFKFPN RLNLEAINYM AADGDFKIKC VAFD)
Conjugation	Biotin
Alternate Names	HBL; Gal-1; GAL1; HPL; Lectin galactoside-binding soluble 1; Galectin-1; 14 kDa laminin-binding protein; Lactose-binding lectin 1; GBP; Beta-galactoside-binding lectin L-14-I; Putative MAPK-activating protein PM12; 14 kDa lectin; Galaptin; S-Lac lectin 1; HLBP14

Application Instructions

Application table	Application	Dilution
	ELISA	Direct: 0.25 - 1.0 µg/ml Sandwich: 0.25 - 1.0 µg/ml with ARG56662 as a capture antibody
	WB	0.1 - 0.2 µg/ml

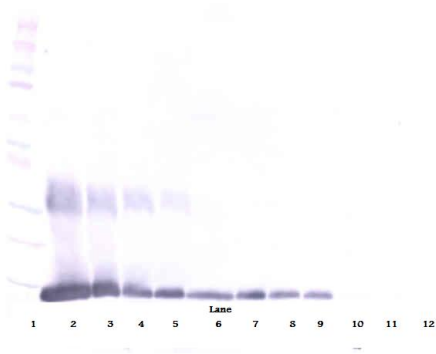
Application Note * The dilutions indicate recommended starting dilutions and the optimal dilutions or concentrations should be determined by the scientist.

Properties

Form	Liquid
Purification	Purified by affinity chromatography.
Buffer	PBS (pH 7.2)
Concentration	1 mg/ml
Storage instruction	Aliquot and store in the dark at 2-8°C. Keep protected from prolonged exposure to light. Avoid repeated freeze/thaw cycles. Suggest spin the vial prior to opening. The antibody solution should be gently mixed before use.
Note	For laboratory research only, not for drug, diagnostic or other use.

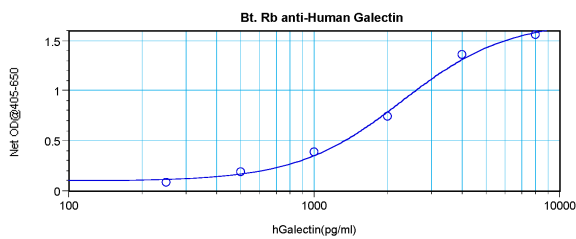
Database links	GeneID: 3956 Human Swiss-port # P09382 Human
Gene Symbol	LGALS1
Gene Full Name	lectin, galactoside-binding, soluble, 1
Background	The galectins are a family of beta-galactoside-binding proteins implicated in modulating cell-cell and cell-matrix interactions. This gene product may act as an autocrine negative growth factor that regulates cell proliferation. [provided by RefSeq, Jul 2008]
Function	May regulate apoptosis, cell proliferation and cell differentiation. Binds beta-galactoside and a wide array of complex carbohydrates. Inhibits CD45 protein phosphatase activity and therefore the dephosphorylation of Lyn kinase. Strong inducer of T-cell apoptosis. [UniProt]
Calculated Mw	15 kDa

Images



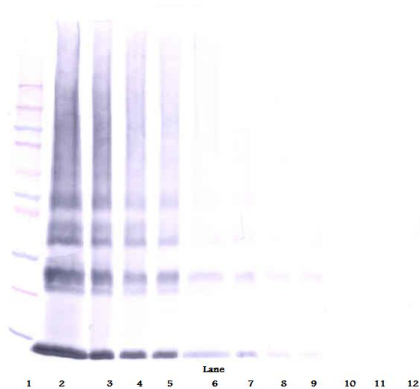
ARG56772 anti-Galectin 1 antibody (Biotin) WB image

Western blot: 250 - 0.24 ng of Human Galectin-1 stained with ARG56772 anti-Galectin 1 antibody (Biotin), under reducing conditions.



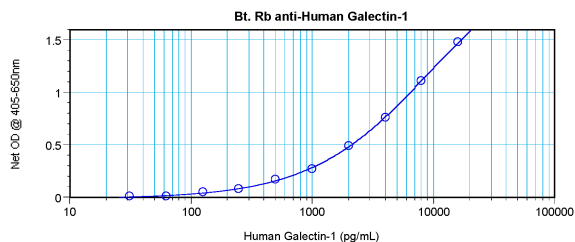
ARG56772 anti-Galectin 1 antibody (Biotin) standard curve image

Direct ELISA: ARG56772 anti-Galectin 1 antibody (Biotin) at 0.25 - 1.0 µg/ml results of a typical standard run with optical density.



ARG56772 anti-Galectin 1 antibody (Biotin) WB image

Western blot: 250 - 0.24 ng of Human Galectin-1 stained with ARG56772 anti-Galectin 1 antibody (Biotin), under non-reducing conditions.



ARG56772 anti-Galectin 1 antibody (Biotin) standard curve image

Sandwich ELISA: ARG56772 anti-Galectin 1 antibody (Biotin) as a detection antibody at 0.25 - 1.0 µg/ml combined with ARG56662 anti-Galectin 1 antibody as a capture antibody. Results of a typical standard run with optical density.