

## ARG56800 anti-GM-CSF antibody (Biotin)

Package: 50 µg  
Store at: 4°C

### Summary

Product Description	Biotin-conjugated Rabbit Polyclonal antibody recognizes GM-CSF
Tested Reactivity	Hu
Tested Application	ELISA, WB
Host	Rabbit
Clonality	Polyclonal
Isotype	IgG
Target Name	GM-CSF
Species	Human
Immunogen	E.coli derived Recombinant Human GM-CSF. (MAPARSPSPS TQPWEHVNAI QEARRLLNLS RDTAAEMNET VEVISEMFDL QEPTCLQTRL ELYKQGLRGS LTKLKGPLTM MASHYKQHCP PTPETSCATQ IITFESFKEN LKDFLLVIPF DCWEPVQE)
Conjugation	Biotin
Alternate Names	GM-CSF; Granulocyte-macrophage colony-stimulating factor; CSF; GMCSF; Molgramostin; Colony-stimulating factor; Sargramostim

### Application Instructions

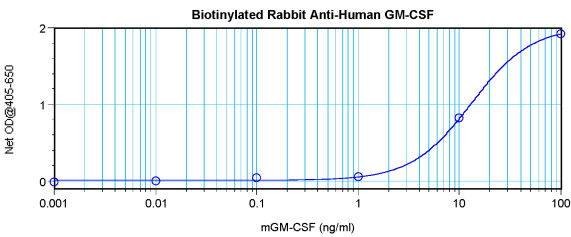
Application table	Application	Dilution
	ELISA	Direct: 0.25 - 1.0 µg/ml Sandwich: 0.25 - 1.0 µg/ml with ARG56690 as a capture antibody
	WB	0.1 - 0.2 µg/ml
Application Note	* The dilutions indicate recommended starting dilutions and the optimal dilutions or concentrations should be determined by the scientist.	

### Properties

Form	Liquid
Purification	Purified by affinity chromatography.
Buffer	PBS (pH 7.2)
Concentration	1 mg/ml
Storage instruction	Aliquot and store in the dark at 2-8°C. Keep protected from prolonged exposure to light. Avoid repeated freeze/thaw cycles. Suggest spin the vial prior to opening. The antibody solution should be gently mixed before use.
Note	For laboratory research only, not for drug, diagnostic or other use.

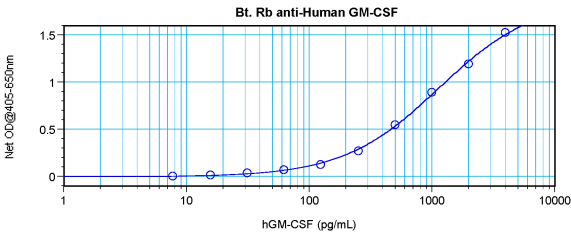
Database links	<a href="#">GeneID: 1437 Human</a> <a href="#">Swiss-port # P04141 Human</a>
Gene Symbol	CSF2
Gene Full Name	colony stimulating factor 2 (granulocyte-macrophage)
Background	The protein encoded by this gene is a cytokine that controls the production, differentiation, and function of granulocytes and macrophages. The active form of the protein is found extracellularly as a homodimer. This gene has been localized to a cluster of related genes at chromosome region 5q31, which is known to be associated with interstitial deletions in the 5q- syndrome and acute myelogenous leukemia. Other genes in the cluster include those encoding interleukins 4, 5, and 13. [provided by RefSeq, Jul 2008]
Function	Cytokine that stimulates the growth and differentiation of hematopoietic precursor cells from various lineages, including granulocytes, macrophages, eosinophils and erythrocytes. [UniProt]
Highlight	Related products: <a href="#">GM-CSF antibodies</a> ; <a href="#">GM-CSF ELISA Kits</a> ; <a href="#">GM-CSF Duos / Panels</a> ; <a href="#">GM-CSF recombinant proteins</a> ; <a href="#">Anti-Rabbit IgG secondary antibodies</a> ; Related news: <a href="#">HMGB1 in inflammation</a> <a href="#">Inflammatory Cytokines</a>
Calculated Mw	16 kDa

Images



ARG56800 anti-GM-CSF antibody (Biotin) standard curve image

Direct ELISA: ARG56800 anti-GM-CSF antibody (Biotin) at 0.25 - 1.0 µg/ml results of a typical standard run with optical density.



ARG56800 anti-GM-CSF antibody (Biotin) standard curve image

Sandwich ELISA: ARG56800 anti-GM-CSF antibody (Biotin) as a detection antibody at 0.25 - 1.0 µg/ml combined with ARG56690 anti-GM-CSF antibody as a capture antibody. Results of a typical standard run with optical density.