

ARG56832 anti-CD258 / LIGHT antibody

Package: 50 µg
Store at: -20°C

Summary

| | |
|---------------------|---|
| Product Description | Rabbit Polyclonal antibody recognizes CD258 / LIGHT |
| Tested Reactivity | Hu |
| Tested Application | ELISA, IHC-P, WB |
| Host | Rabbit |
| Clonality | Polyclonal |
| Isotype | IgG |
| Target Name | CD258 / LIGHT |
| Species | Human |
| Immunogen | Hi-5 Insect cells derived Recombinant Human LIGHT. (RLGEMVTRLP DGPAGSWEQL IQERRSHEVN PAAHLTGANS SLTGSGGPLL WETQLGLAFL RGLSYHDGAL VVTKAGYYYI YSKVQLGGVG CPLGLASTIT HGLYKRTPRY PEELELLVSQ QSPCGRATSS SRVWWDSFL GGVVHLEAGE KVVVRVLDER LVRLRDGTRS YFGAFMV) |
| Conjugation | Un-conjugated |
| Alternate Names | CD258; Herpes virus entry mediator ligand; HVEM; HVEM-L; Herpesvirus entry mediator ligand; LTg; LIGHT; CD antigen CD258; TR2; Tumor necrosis factor ligand superfamily member 14 |

Application Instructions

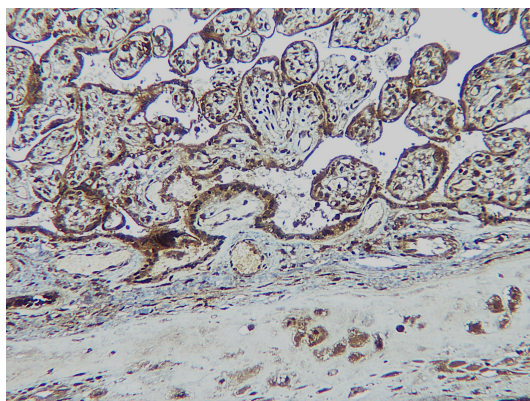
| Application table | Application | Dilution |
|-------------------|--|---|
| | ELISA | Sandwich: 0.5 - 2.0 µg/ml as a capture antibody |
| | IHC-P | 2.5 µg/ml |
| | WB | 0.1 - 0.2 µg/ml |
| Application Note | * The dilutions indicate recommended starting dilutions and the optimal dilutions or concentrations should be determined by the scientist. | |

Properties

| | |
|---------------------|---|
| Form | Liquid |
| Purification | Affinity purification with immunogen. |
| Concentration | 1 mg/ml |
| Storage instruction | For continuous use, store undiluted antibody at 2-8°C for up to a week. For long-term storage, aliquot and store at -20°C. Storage in frost free freezers is not recommended. Avoid repeated freeze/thaw cycles. Suggest spin the vial prior to opening. The antibody solution should be gently mixed before use. |
| Note | For laboratory research only, not for drug, diagnostic or other use. |

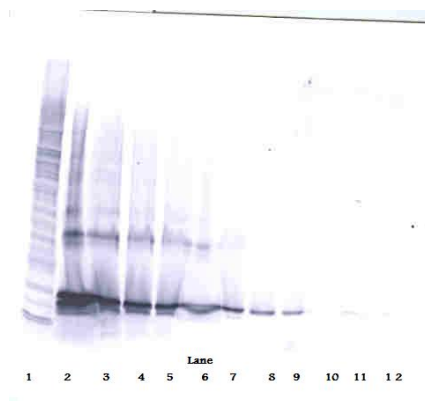
| | |
|----------------|--|
| Database links | GeneID: 8740 Human Swiss-port # O43557 Human |
| Gene Symbol | TNFSF14 |
| Gene Full Name | tumor necrosis factor (ligand) superfamily, member 14 |
| Background | The protein encoded by this gene is a member of the tumor necrosis factor (TNF) ligand family. This protein is a ligand for TNFRSF14, which is a member of the tumor necrosis factor receptor superfamily, and which is also known as a herpesvirus entry mediator (HVEM). This protein may function as a costimulatory factor for the activation of lymphoid cells and as a deterrent to infection by herpesvirus. This protein has been shown to stimulate the proliferation of T cells, and trigger apoptosis of various tumor cells. This protein is also reported to prevent tumor necrosis factor alpha mediated apoptosis in primary hepatocyte. Two alternatively spliced transcript variant encoding distinct isoforms have been reported. [provided by RefSeq, Jul 2008] |
| Function | Cytokine that binds to TNFRSF3/LTBR. Binding to the decoy receptor TNFRSF6B modulates its effects. Activates NFkB, stimulates the proliferation of T-cells, and inhibits growth of the adenocarcinoma HT-29. Acts as a receptor for Herpes simplex virus. [UniProt] |
| Calculated Mw | 26 kDa |
| PTM | N-glycosylated. The soluble form of isoform 1 derives from the membrane form by proteolytic processing. |

Images



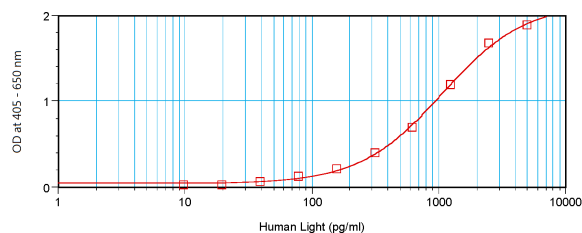
ARG56832 anti-CD258 / LIGHT antibody IHC-P image

Immunohistochemistry: Formalin-fixed and paraffin-embedded sections of Human normal placenta. The recommended ARG56832 anti-CD258 / LIGHT antibody concentration is 2.5 µg/ml with an overnight incubation at 4°C. An HRP-labeled polymer detection system was used with a DAB chromogen. Antigen Retrieval: Boil tissue section in a buffer (pH 8.0) followed by cooling at RT for 20 min.



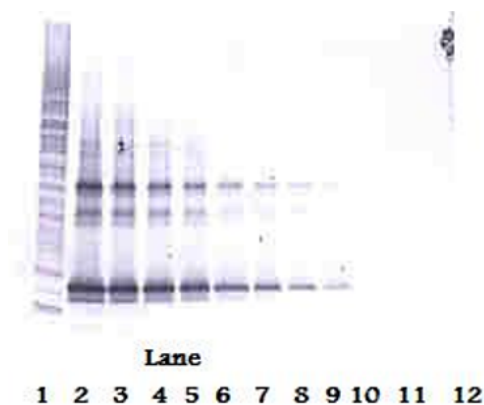
ARG56832 anti-CD258 / LIGHT antibody WB image

Western blot: 250 - 0.24 ng of Human LIGHT stained with ARG56832 anti-CD258 / LIGHT antibody, under reducing conditions.



ARG56832 anti-CD258 / LIGHT antibody standard curve image

Sandwich ELISA: ARG56832 anti-CD258 / LIGHT antibody as a capture antibody at 0.5 - 2.0 $\mu\text{g/ml}$ combined with Biotinylated anti-LIGHT antibody as a detection antibody. Results of a typical standard run with optical density reading at 405 - 650 nm.



ARG56832 anti-CD258 / LIGHT antibody WB image

Western blot: 250 - 0.24 ng of Human LIGHT stained with ARG56832 anti-CD258 / LIGHT antibody, under non-reducing conditions.