

ARG56836 anti-IFN beta antibody

Package: 50 µg
Store at: -20°C

Summary

Product Description	Rabbit Polyclonal antibody recognizes IFN beta
Tested Reactivity	Hu
Tested Application	ELISA, IHC-P, Neut, WB
Host	Rabbit
Clonality	Polyclonal
Isotype	IgG
Target Name	IFN beta
Species	Human
Immunogen	E.coli derived recombinant Human Interferon beta. (MSYNLLGFLQ RSSNFQCQKL LWQLNGRLEY CLKDRMNFDI PEEIKQLQQF QKEDAALTIY EMLQNIFAIF RQDSSSTGWN ETIVENLLAN VYHQINHLKT VLEEKLEKED FTRGKLMSSL HLKRYYGRIL HYLKAKEYSH CAWTIVRVEI LRNFYFINRL TGYLRN)
Conjugation	Un-conjugated
Alternate Names	Fibroblast interferon; IFN-beta; IFNB; IFF; IFB; Interferon beta

Application Instructions

Application table	Application	Dilution
	ELISA	Sandwich: 0.5 - 2.0 µg/ml as a capture antibody
	IHC-P	0.75 µg/ml
	Neut	2.5 µg/ml (To yield [ND50] of the biological activity of Human IFN-beta (5.00µg/ml))
	WB	0.1 - 0.2 µg/ml
Application Note	IHC-P: Antigen Retrieval: Boil tissue section in Sodium citrate buffer (pH 6.0) followed by cooling at RT for 20 min. * The dilutions indicate recommended starting dilutions and the optimal dilutions or concentrations should be determined by the scientist.	

Properties

Form	Liquid
Purification	Affinity purification with immunogen.
Buffer	PBS (pH 7.2)
Concentration	1 mg/ml
Storage instruction	For continuous use, store undiluted antibody at 2-8°C for up to a week. For long-term storage, aliquot and store at -20°C or below. Storage in frost free freezers is not recommended. Avoid repeated

freeze/thaw cycles. Suggest spin the vial prior to opening. The antibody solution should be gently mixed before use.

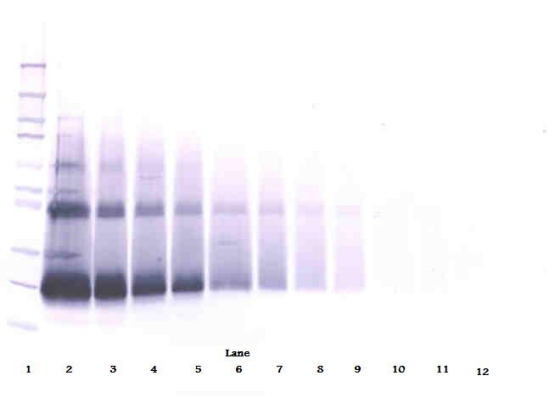
Note

For laboratory research only, not for drug, diagnostic or other use.

Bioinformation

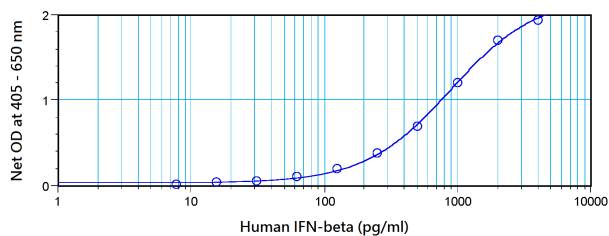
Database links	GeneID: 3456 Human Swiss-port # P01574 Human
Gene Symbol	IFNB1
Gene Full Name	interferon, beta 1, fibroblast
Background	This gene encodes a cytokine that belongs to the interferon family of signaling proteins, which are released as part of the innate immune response to pathogens. The protein encoded by this gene belongs to the type I class of interferons, which are important for defense against viral infections. In addition, type I interferons are involved in cell differentiation and anti-tumor defenses. Following secretion in response to a pathogen, type I interferons bind a homologous receptor complex and induce transcription of genes such as those encoding inflammatory cytokines and chemokines. Overactivation of type I interferon secretion is linked to autoimmune diseases. Mice deficient for this gene display several phenotypes including defects in B cell maturation and increased susceptibility to viral infection. [provided by RefSeq, Sep 2015]
Function	Has antiviral, antibacterial and anticancer activities. [UniProt]
Highlight	Related products: IFN beta antibodies ; IFN beta ELISA Kits ; IFN beta recombinant proteins ; Anti-Rabbit IgG secondary antibodies ; Related news: Exploring Antiviral Immune Response circNDUFB2, a circular RNA (circRNA), activates anti-tumor immunity
Calculated Mw	22 kDa

Images



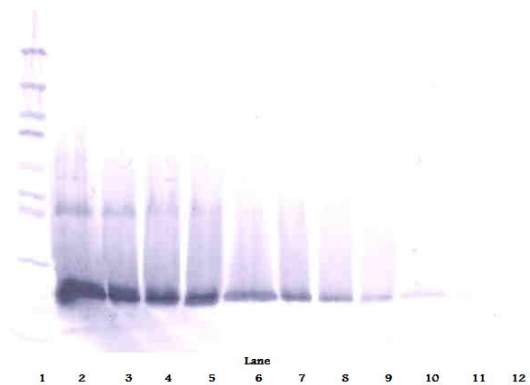
ARG56836 anti-IFN beta antibody WB image

Western blot: 250 - 0.24 ng of Human IFN-beta stained with ARG56836 anti-IFN beta antibody, under non-reducing conditions.



ARG56836 anti-IFN beta antibody standard curve image

Sandwich ELISA: ARG56836 anti-IFN beta antibody as a capture antibody at 0.5 - 2.0 $\mu\text{g/ml}$ combined with anti-Interferon beta antibody (Biotin) as a detection antibody. Results of a typical standard run with optical density reading at 405 - 650 nm.



ARG56836 anti-IFN beta antibody WB image

Western blot: 250 - 0.24 ng of Human IFN-beta stained with ARG56836 anti-IFN beta antibody, under reducing conditions.