

ARG56851 anti-UBE2D1 antibody

Package: 100 µl
Store at: -20°C

Summary

Product Description	Rabbit Polyclonal antibody recognizes UBE2D1
Tested Reactivity	Hu, Ms
Predict Reactivity	Bov, Rat
Tested Application	IHC-P, WB
Host	Rabbit
Clonality	Polyclonal
Isotype	IgG
Target Name	UBE2D1
Species	Human
Immunogen	KLH-conjugated synthetic peptide corresponding to aa. 111-140 (C-terminus) of Human UBE2D1.
Conjugation	Un-conjugated
Alternate Names	E2(17)KB1; EC 6.3.2.19; UBC4/5 homolog; Ubiquitin-conjugating enzyme E2; UbcH5; SFT; UBCH5; Ubiquitin carrier protein D1; Ubiquitin-conjugating enzyme E2 D1; UBC4/5; Stimulator of Fe transport; Ubiquitin-protein ligase D1; Ubiquitin-conjugating enzyme E2-17 kDa 1; UBCH5A

Application Instructions

Application table	Application	Dilution
	IHC-P	1:50 - 1:100
	WB	1:1000
Application Note	* The dilutions indicate recommended starting dilutions and the optimal dilutions or concentrations should be determined by the scientist.	
Positive Control	A431	

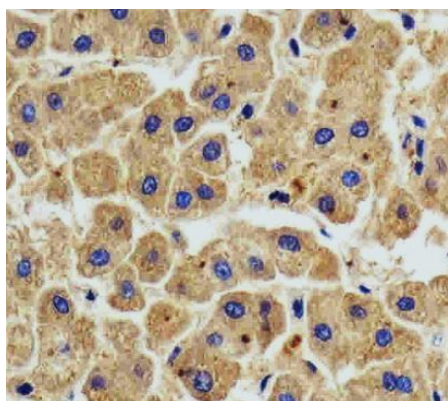
Properties

Form	Liquid
Purification	Purified by ammonium sulfate precipitation through ion exchange chromatography.
Buffer	PBS and 0.09% (W/V) Sodium azide.
Preservative	0.09% (W/V) Sodium azide.
Storage instruction	For continuous use, store undiluted antibody at 2-8°C for up to a week. For long-term storage, aliquot and store at -20°C or below. Storage in frost free freezers is not recommended. Avoid repeated freeze/thaw cycles. Suggest spin the vial prior to opening. The antibody solution should be gently mixed before use.
Note	For laboratory research only, not for drug, diagnostic or other use.

Bioinformation

Database links	GeneID: 216080 Mouse
	GeneID: 7321 Human
	Swiss-port # P51668 Human
	Swiss-port # P61080 Mouse
Gene Symbol	UBE2D1
Gene Full Name	ubiquitin-conjugating enzyme E2D 1
Background	<p>The modification of proteins with ubiquitin is an important cellular mechanism for targeting abnormal or short-lived proteins for degradation. Ubiquitination involves at least three classes of enzymes: ubiquitin-activating enzymes, or E1s, ubiquitin-conjugating enzymes, or E2s, and ubiquitin-protein ligases, or E3s. This gene encodes a member of the E2 ubiquitin-conjugating enzyme family. This enzyme is closely related to a stimulator of iron transport (SFT), and is up-regulated in hereditary hemochromatosis. It also functions in the ubiquitination of the tumor-suppressor protein p53 and the hypoxia-inducible transcription factor HIF1alpha by interacting with the E1 ubiquitin-activating enzyme and the E3 ubiquitin-protein ligases. Two transcript variants encoding different isoforms have been found for this gene. [provided by RefSeq, Mar 2011]</p>
Function	<p>Accepts ubiquitin from the E1 complex and catalyzes its covalent attachment to other proteins. In vitro catalyzes 'Lys-48'-linked polyubiquitination. Mediates the selective degradation of short-lived and abnormal proteins. Functions in the E6/E6-AP-induced ubiquitination of p53/TP53. Mediates ubiquitination of PEX5 and auto-ubiquitination of STUB1, TRAF6 and TRIM63/MURF1. Ubiquitinates STUB1-associated HSP90AB1 in vitro. Lacks inherent specificity for any particular lysine residue of ubiquitin. Essential for viral activation of IRF3. Mediates polyubiquitination of CYP3A4. [UniProt]</p>
Calculated Mw	17 kDa
Cellular Localization	Cytoplasm.

Images



ARG56851 anti-UBE2D1 antibody IHC-P image

Immunohistochemistry: Paraffin-embedded Human liver tissue stained with ARG56851 anti-UBE2D1 antibody at 1:100 dilution.

ARG56851 anti-UBE2D1 antibody WB image

Western blot: 35 µg of A431 cell lysate stained with ARG56851 anti-UBE2D1 antibody at 1:1000 dilution.

