

ARG56875 anti-BTC / Betacellulin antibody

Package: 100 µl
Store at: -20°C

Summary

Product Description	Rabbit Polyclonal antibody recognizes BTC / Betacellulin
Tested Reactivity	Hu, Ms, Rat
Tested Application	WB
Host	Rabbit
Clonality	Polyclonal
Isotype	IgG
Target Name	BTC / Betacellulin
Species	Human
Immunogen	Recombinant protein of Human Betacellulin.
Conjugation	Un-conjugated
Alternate Names	Probetacellulin; BTC

Application Instructions

Predict Reactivity Note	Mouse, Rat				
Application table	<table> <tr> <th>Application</th><th>Dilution</th></tr> <tr> <td>WB</td><td>1:500 - 1:2000</td></tr> </table>	Application	Dilution	WB	1:500 - 1:2000
Application	Dilution				
WB	1:500 - 1:2000				
Application Note	* The dilutions indicate recommended starting dilutions and the optimal dilutions or concentrations should be determined by the scientist.				
Positive Control	OVCAR3				

Properties

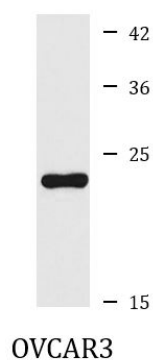
Form	Liquid
Purification	Affinity purification with immunogen.
Buffer	PBS (pH 7.3), 0.02% Sodium azide and 50% Glycerol.
Preservative	0.02% Sodium azide
Stabilizer	50% Glycerol
Storage instruction	For continuous use, store undiluted antibody at 2-8°C for up to a week. For long-term storage, aliquot and store at -20°C. Storage in frost free freezers is not recommended. Avoid repeated freeze/thaw cycles. Suggest spin the vial prior to opening. The antibody solution should be gently mixed before use.
Note	For laboratory research only, not for drug, diagnostic or other use.

Bioinformation

Database links	GeneID: 12223 Mouse
	GeneID: 685 Human
	Swiss-port # P35070 Human
	Swiss-port # Q05928 Mouse

Gene Symbol	BTC
Gene Full Name	betacellulin
Background	The protein encoded by this gene is a member of the EGF family of growth factors. It is synthesized primarily as a transmembrane precursor, which is then processed to mature molecule by proteolytic events. This protein is a ligand for the EGF receptor. [provided by RefSeq, Jul 2008]
Function	Growth factor that binds to EGFR, ERBB4 and other EGF receptor family members. Potent mitogen for retinal pigment epithelial cells and vascular smooth muscle cells. [UniProt]
Calculated Mw	20 kDa

Images



ARG56875 anti-BTC / Betacellulin antibody WB image

Western blot: OVCAR3 cell lysate stained with ARG56875 anti-BTC / Betacellulin antibody.