

ARG56903 anti-CD305 / LAIR1 antibody

Package: 100 µl
Store at: -20°C

Summary

Product Description	Rabbit Polyclonal antibody recognizes CD305 / LAIR1
Tested Reactivity	Hu
Tested Application	WB
Host	Rabbit
Clonality	Polyclonal
Isotype	IgG
Target Name	CD305 / LAIR1
Species	Human
Immunogen	Recombinant protein of Human CD305 / LAIR1.
Conjugation	Un-conjugated
Alternate Names	LAIR-1; hLAIR1; CD305; CD antigen CD305; Leukocyte-associated immunoglobulin-like receptor 1

Application Instructions

Application table	<table> <tr> <th>Application</th><th>Dilution</th></tr> <tr> <td>WB</td><td>1:1000 - 1:4000</td></tr> </table>	Application	Dilution	WB	1:1000 - 1:4000
Application	Dilution				
WB	1:1000 - 1:4000				
Application Note	* The dilutions indicate recommended starting dilutions and the optimal dilutions or concentrations should be determined by the scientist.				
Positive Control	Rat liver, Mouse lung and Jurkat				
Observed Size	35 kDa				

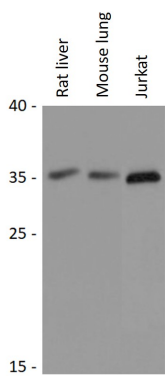
Properties

Form	Liquid
Purification	Affinity purified.
Buffer	PBS (pH 7.3), 0.02% Sodium azide and 50% Glycerol.
Preservative	0.02% Sodium azide
Stabilizer	50% Glycerol
Storage instruction	For continuous use, store undiluted antibody at 2-8°C for up to a week. For long-term storage, aliquot and store at -20°C. Storage in frost free freezers is not recommended. Avoid repeated freeze/thaw cycles. Suggest spin the vial prior to opening. The antibody solution should be gently mixed before use.
Note	For laboratory research only, not for drug, diagnostic or other use.

Bioinformation

Gene Symbol	LAIR1
Gene Full Name	leukocyte-associated immunoglobulin-like receptor 1
Background	The protein encoded by this gene is an inhibitory receptor found on peripheral mononuclear cells, including natural killer cells, T cells, and B cells. Inhibitory receptors regulate the immune response to prevent lysis of cells recognized as self. The gene is a member of both the immunoglobulin superfamily and the leukocyte-associated inhibitory receptor family. The gene maps to a region of 19q13.4 called the leukocyte receptor cluster, which contains at least 29 genes encoding leukocyte-expressed receptors of the immunoglobulin superfamily. The encoded protein has been identified as an anchor for tyrosine phosphatase SHP-1, and may induce cell death in myeloid leukemias. Alternative splicing results in multiple transcript variants. [provided by RefSeq, Jan 2014]
Function	Functions as an inhibitory receptor that plays a constitutive negative regulatory role on cytolytic function of natural killer (NK) cells, B-cells and T-cells. Activation by Tyr phosphorylation results in recruitment and activation of the phosphatases PTPN6 and PTPN11. It also reduces the increase of intracellular calcium evoked by B-cell receptor ligation. May also play its inhibitory role independently of SH2-containing phosphatases. Modulates cytokine production in CD4+ T-cells, down-regulating IL2 and IFNG production while inducing secretion of transforming growth factor beta. Down-regulates also IgG and IgE production in B-cells as well as IL8, IL10 and TNF secretion. Inhibits proliferation and induces apoptosis in myeloid leukemia cell lines as well as prevents nuclear translocation of NF-kappa-B p65 subunit/RELA and phosphorylation of I-kappa-B alpha/CHUK in these cells. Inhibits the differentiation of peripheral blood precursors towards dendritic cells. [UniProt]
Calculated Mw	31 kDa
PTM	Phosphorylation at Tyr-251 and Tyr-281 activates it. May be phosphorylated by LCK. N-glycosylated. [UniProt]
Cellular Localization	Cell membrane; Single-pass type I membrane protein. [UniProt]

Images



ARG56903 anti-CD305 / LAIR1 antibody WB image

Western blot: 25 µg of Rat liver, Mouse lung and Jurkat cell lysates stained with ARG56903 anti-CD305 / LAIR1 antibody at 1:1000 dilution.