

## ARG56947 anti-Hexokinase 1 / 2 antibody [1A7]

Package: 50 µl  
Store at: -20°C

### Summary

Product Description	Mouse Monoclonal antibody [1A7] recognizes Hexokinase 1 / 2
Tested Reactivity	Hu
Tested Application	FACS, ICC/IF, WB
Host	Mouse
Clonality	Monoclonal
Clone	1A7
Isotype	IgG1, kappa
Target Name	Hexokinase 1 / 2
Species	Human
Immunogen	Recombinant fragment around aa. 1-917 of Human Hexokinase 1/2.
Conjugation	Un-conjugated
Alternate Names	Muscle form hexokinase; HK II; Hexokinase-2; Hexokinase type II; EC 2.7.1.1; HXK2; HKII

### Application Instructions

Application table	Application	Dilution
	FACS	Assay-dependent
	ICC/IF	Assay-dependent
	WB	1:1000 - 1:3000
Application Note	* The dilutions indicate recommended starting dilutions and the optimal dilutions or concentrations should be determined by the scientist.	

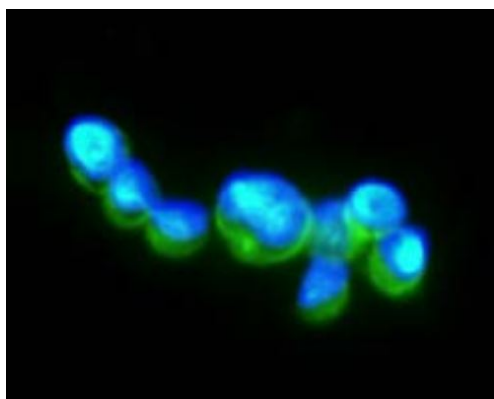
### Properties

Form	Liquid
Purification	Purification with Protein G.
Buffer	PBS (pH 7.4), 0.02% Sodium azide and 10% Glycerol.
Preservative	0.02% Sodium azide
Stabilizer	10% Glycerol
Concentration	1 mg/ml
Storage instruction	For continuous use, store undiluted antibody at 2-8°C for up to a week. For long-term storage, aliquot and store at -20°C. Storage in frost free freezers is not recommended. Avoid repeated freeze/thaw cycles. Suggest spin the vial prior to opening. The antibody solution should be gently mixed before use.

## Bioinformation

Database links	<a href="#">GeneID: 3099 Human</a> <a href="#">Swiss-port # P52789 Human</a>
Gene Symbol	HK2
Gene Full Name	hexokinase 2
Background	Hexokinases phosphorylate glucose to produce glucose-6-phosphate, the first step in most glucose metabolism pathways. This gene encodes hexokinase 2, the predominant form found in skeletal muscle. It localizes to the outer membrane of mitochondria. Expression of this gene is insulin-responsive, and studies in rat suggest that it is involved in the increased rate of glycolysis seen in rapidly growing cancer cells. [provided by RefSeq, Apr 2009]
Calculated Mw	102 kDa

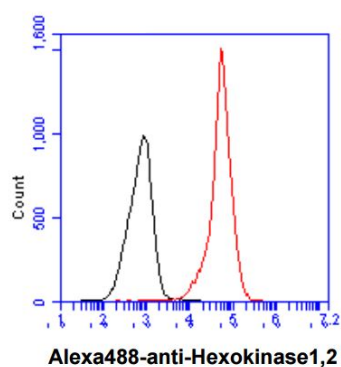
## Images



ARG56947 anti-Hexokinase 1/2 antibody [1A7] ICC/IF image

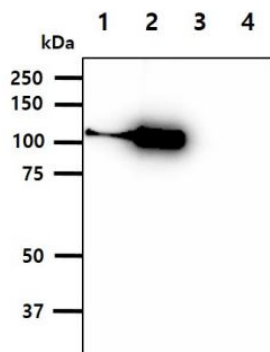
Immunofluorescence: Jurkat cell line stained with ARG56947 anti-Hexokinase 1/2 antibody [1A7] at 1:100 (Green).

DAPI (Blue) for nucleus staining.



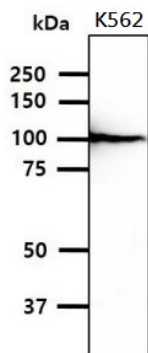
ARG56947 anti-Hexokinase 1/2 antibody [1A7] FACS image

Flow Cytometry: Jurkat cell line stained with ARG56947 anti-Hexokinase 1/2 antibody [1A7] at 2-5  $\mu$ g for  $1 \times 10^6$  cells (red line). Secondary antibody: Goat anti-Mouse IgG Alexa fluor 488 conjugate. Isotype control antibody was Mouse IgG (black line).



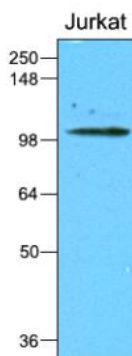
ARG56947 anti-Hexokinase 1/2 antibody [1A7] WB image

Western blot: 20 ng of 1) Hexokinase 1 recombinant protein, 2) Hexokinase 2 recombinant protein, 3) Hexokinase 3 recombinant protein, 4) Hexokinase 4 recombinant protein stained with ARG56947 anti-Hexokinase 1/2 antibody [1A7] at 1:1000.



ARG56947 anti-Hexokinase 1/2 antibody [1A7] WB image

Western blot: 40 µg of K562 cell lysate stained with ARG56947 anti-Hexokinase 1/2 antibody [1A7] at 1:1000.



ARG56947 anti-Hexokinase 1/2 antibody [1A7] WB image

Western blot: 35 µg of Jurkat cell lysate stained with ARG56947 anti-Hexokinase 1/2 antibody [1A7] at 1:2000.