

## ARG56962 anti-PPM1G / PP2C gamma antibody [k1G6]

Package: 50 µl  
Store at: -20°C

### Summary

Product Description	Mouse Monoclonal antibody [k1G6] recognizes PPM1G / PP2C gamma
Tested Reactivity	Hu
Tested Application	IHC-P, WB
Host	Mouse
Clonality	Monoclonal
Clone	k1G6
Isotype	IgG1, kappa
Target Name	PPM1G / PP2C gamma
Species	Human
Immunogen	Recombinant fragment around aa. 317-546 of Human PPM1G / PP2C gamma.
Conjugation	Un-conjugated
Alternate Names	Protein phosphatase magnesium-dependent 1 gamma; PP2CGAMMA; PPP2CG; EC 3.1.3.16; Protein phosphatase 1C; Protein phosphatase 1G; Protein phosphatase 2C isoform gamma; PP2CG; PP2C-gamma

### Application Instructions

Application table	Application	Dilution
	IHC-P	1:50
	WB	1:1000 - 1:2000
Application Note	IHC-P: Antigen Retrieval: Boil tissue section in 0.1M Sodium citrate buffer (pH 6.0) for 20 min. * The dilutions indicate recommended starting dilutions and the optimal dilutions or concentrations should be determined by the scientist.	

### Properties

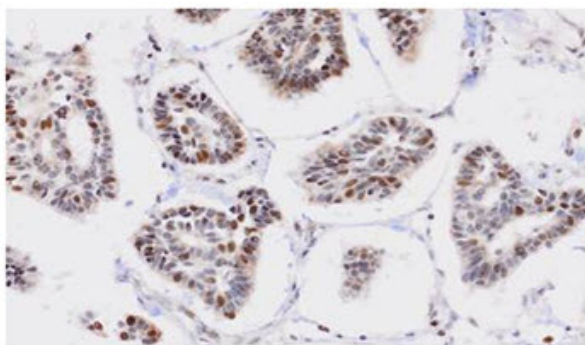
Form	Liquid
Purification	Purification with Protein G.
Buffer	PBS (pH 7.4), 0.02% Sodium azide and 10% Glycerol.
Preservative	0.02% Sodium azide
Stabilizer	10% Glycerol
Concentration	1 mg/ml
Storage instruction	For continuous use, store undiluted antibody at 2-8°C for up to a week. For long-term storage, aliquot and store at -20°C. Storage in frost free freezers is not recommended. Avoid repeated freeze/thaw cycles. Suggest spin the vial prior to opening. The antibody solution should be gently mixed before use.

Note For laboratory research only, not for drug, diagnostic or other use.

## Bioinformation

Database links	<a href="#">GeneID: 5496 Human</a> <a href="#">Swiss-port # O15355 Human</a>
Gene Symbol	PPM1G
Gene Full Name	protein phosphatase, Mg2+/Mn2+ dependent, 1G
Background	The protein encoded by this gene is a member of the PP2C family of Ser/Thr protein phosphatases. PP2C family members are known to be negative regulators of cell stress response pathways. This phosphatase is found to be responsible for the dephosphorylation of Pre-mRNA splicing factors, which is important for the formation of functional spliceosome. Studies of a similar gene in mice suggested a role of this phosphatase in regulating cell cycle progression. [provided by RefSeq, Apr 2010]
Calculated Mw	59 kDa

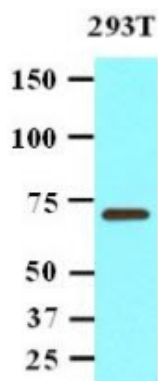
## Images



Human breast cancer tissue

ARG56962 anti-PPM1G / PP2C gamma antibody [k1G6] IHC-P image

Immunohistochemistry: Paraffin embedded sections of Human breast cancer tissue stained with ARG56962 anti-PPM1G / PP2C gamma antibody [k1G6] at 1:50 for 2 hours at RT. Antigen Retrieval: Boil tissue section in 0.1M Sodium citrate buffer (pH 6.0) for 20 min.



ARG56962 anti-PPM1G / PP2C gamma antibody [k1G6] WB image

Western blot: 20 µg of 293T cell lysate stained with ARG56962 anti-PPM1G / PP2C gamma antibody [k1G6] at 1:1000.