

ARG56979 anti-MAT2A antibody [3A2]

Package: 50 µl
Store at: -20°C

Summary

Product Description	Mouse Monoclonal antibody [3A2] recognizes MAT2A
Tested Reactivity	Hu
Tested Application	WB
Host	Mouse
Clonality	Monoclonal
Clone	3A2
Isotype	IgG2b, kappa
Target Name	MAT2A
Species	Human
Immunogen	Recombinant fragment around aa. 1-395 of Human MAT2A.
Conjugation	Un-conjugated
Alternate Names	MAT 2; SAMS2; AdoMet synthase 2; MATA2; Methionine adenosyltransferase 2; EC 2.5.1.6; MAT-II; Methionine adenosyltransferase II; MATII; S-adenosylmethionine synthase isoform type-2

Application Instructions

Application table	Application	Dilution
	WB	1:1000 - 1:2000
Application Note	* The dilutions indicate recommended starting dilutions and the optimal dilutions or concentrations should be determined by the scientist.	

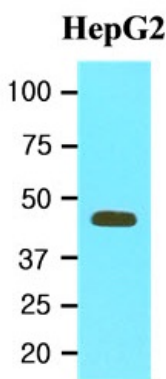
Properties

Form	Liquid
Purification	Purification with Protein G.
Buffer	PBS (pH 7.4), 0.02% Sodium azide and 10% Glycerol.
Preservative	0.02% Sodium azide
Stabilizer	10% Glycerol
Concentration	1 mg/ml
Storage instruction	For continuous use, store undiluted antibody at 2-8°C for up to a week. For long-term storage, aliquot and store at -20°C. Storage in frost free freezers is not recommended. Avoid repeated freeze/thaw cycles. Suggest spin the vial prior to opening. The antibody solution should be gently mixed before use.
Note	For laboratory research only, not for drug, diagnostic or other use.

Bioinformation

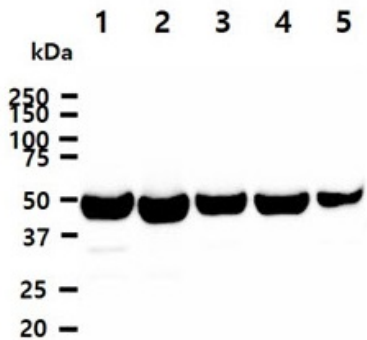
Database links	GeneID: 4144 Human Swiss-port # P31153 Human
Gene Symbol	MAT2A
Gene Full Name	methionine adenosyltransferase II, alpha
Background	The protein encoded by this gene catalyzes the production of S-adenosylmethionine (AdoMet) from methionine and ATP. AdoMet is the key methyl donor in cellular processes. [provided by RefSeq, Jun 2011]
Function	Catalyzes the formation of S-adenosylmethionine from methionine and ATP. [UniProt]
Calculated Mw	44 kDa

Images



ARG56979 anti-MAT2A antibody [3A2] WB image

Western blot: 20 µg of HepG2 cell lysate stained with ARG56979 anti-MAT2A antibody [3A2] at 1:1000.



ARG56979 anti-MAT2A antibody [3A2] WB image

Western blot: 40 µg of 1) HeLa cell lysate, 2) Ramos cell lysate, 3) 293T cell lysate, 4) Jurkat cell lysate, 5) NIH-3T3 cell lysate stained with ARG56979 anti-MAT2A antibody [3A2] at 1:1000.