

## ARG56984 anti-Homer 1 antibody [1F3]

Package: 50 µl  
Store at: -20°C

### Summary

Product Description	Mouse Monoclonal antibody [1F3] recognizes Homer 1
Tested Reactivity	Hu, Ms
Tested Application	WB
Host	Mouse
Clonality	Monoclonal
Clone	1F3
Isotype	IgG2b, kappa
Target Name	Homer 1
Species	Human
Immunogen	Recombinant fragment around aa. 1-354 of Human Homer1.
Conjugation	Un-conjugated
Alternate Names	HOMER; SYN47; Ves-1; Homer-1; HOMER1A; Homer protein homolog 1; HOMER1C; HOMER1B

### Application Instructions

Application table	Application	Dilution
	WB	1:1000 - 1:2000
Application Note	* The dilutions indicate recommended starting dilutions and the optimal dilutions or concentrations should be determined by the scientist.	

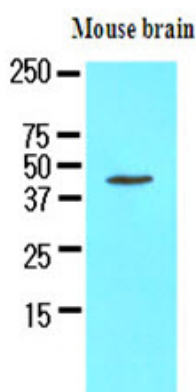
### Properties

Form	Liquid
Purification	Purification with Protein G.
Buffer	PBS (pH 7.4), 0.02% Sodium azide and 10% Glycerol.
Preservative	0.02% Sodium azide
Stabilizer	10% Glycerol
Concentration	1 mg/ml
Storage instruction	For continuous use, store undiluted antibody at 2-8°C for up to a week. For long-term storage, aliquot and store at -20°C. Storage in frost free freezers is not recommended. Avoid repeated freeze/thaw cycles. Suggest spin the vial prior to opening. The antibody solution should be gently mixed before use.
Note	For laboratory research only, not for drug, diagnostic or other use.

## Bioinformation

Database links	<a href="#">GeneID: 26556 Mouse</a>
	<a href="#">GeneID: 9456 Human</a>
	<a href="#">Swiss-port # Q86YM7 Human</a>
	<a href="#">Swiss-port # Q9Z2Y3 Mouse</a>
Gene Symbol	HOMER1
Gene Full Name	homer scaffolding protein 1
Background	This gene encodes a member of the homer family of dendritic proteins. Members of this family regulate group 1 metabotropic glutamate receptor function. [provided by RefSeq, Jul 2008]
Function	Postsynaptic density scaffolding protein. Binds and cross-links cytoplasmic regions of GRM1, GRM5, ITPR1, DNMT3, RYR1, RYR2, SHANK1 and SHANK3. By physically linking GRM1 and GRM5 with ER-associated ITPR1 receptors, it aids the coupling of surface receptors to intracellular calcium release. May also couple GRM1 to PI3 kinase through its interaction with AGAP2. Isoform 1 regulates the trafficking and surface expression of GRM5. Isoform 3 acts as a natural dominant negative, in dynamic competition with constitutively expressed isoform 1 to regulate synaptic metabotropic glutamate function. Isoform 3, may be involved in the structural changes that occur at synapses during long-lasting neuronal plasticity and development. [UniProt]
Calculated Mw	40 kDa

## Images



ARG56984 anti-Homer 1 antibody [1F3] WB image

Western blot: 50 µg of Mouse brain stained with ARG56984 anti-Homer 1 antibody [1F3] at 1:1000.