

ARG57010 anti-CNDP2 antibody [15E5]

Package: 50 µl
Store at: -20°C

Summary

Product Description	Mouse Monoclonal antibody [15E5] recognizes CNDP2
Tested Reactivity	Hu
Tested Application	ICC/IF, WB
Host	Mouse
Clonality	Monoclonal
Clone	15E5
Isotype	IgG1, kappa
Target Name	CNDP2
Species	Human
Immunogen	Recombinant fragment around aa. 1-475 of Human CNDP2.
Conjugation	Un-conjugated
Alternate Names	CN2; Peptidase A; PEPA; EC 3.4.13.18; CNDP dipeptidase 2; CPGL; HsT2298; HEL-S-13; Cytosolic non-specific dipeptidase; Glutamate carboxypeptidase-like protein 1

Application Instructions

Application table	Application	Dilution
	ICC/IF	Assay-dependent
	WB	1:500 - 1:5000
Application Note	* The dilutions indicate recommended starting dilutions and the optimal dilutions or concentrations should be determined by the scientist.	

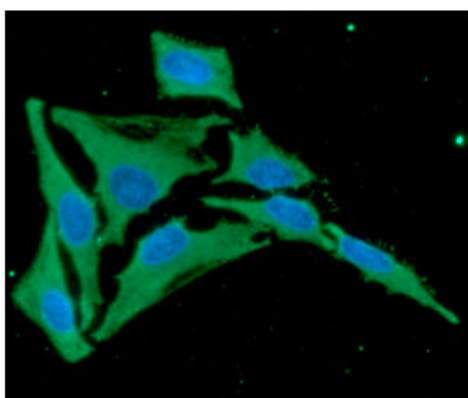
Properties

Form	Liquid
Purification	Purification with Protein G.
Buffer	PBS (pH 7.4), 0.02% Sodium azide and 10% Glycerol.
Preservative	0.02% Sodium azide
Stabilizer	10% Glycerol
Concentration	1 mg/ml
Storage instruction	For continuous use, store undiluted antibody at 2-8°C for up to a week. For long-term storage, aliquot and store at -20°C. Storage in frost free freezers is not recommended. Avoid repeated freeze/thaw cycles. Suggest spin the vial prior to opening. The antibody solution should be gently mixed before use.
Note	For laboratory research only, not for drug, diagnostic or other use.

Bioinformation

Database links	GeneID: 55748 Human Swiss-port # Q96KP4 Human
Gene Symbol	CNDP2
Gene Full Name	CNDP dipeptidase 2 (metallopeptidase M20 family)
Background	CNDP2, also known as tissue carnosinase and peptidase A (EC 3.4.13.18), is a nonspecific dipeptidase rather than a selective carnosinase (Teufel et al., 2003 [PubMed 12473676]).[supplied by OMIM, Mar 2008]
Function	Hydrolyzes a variety of dipeptides including L-carnosine but has a strong preference for Cys-Gly. Isoform 2 may be play a role as tumor suppressor in hepatocellular carcinoma (HCC) cells. [UniProt]
Calculated Mw	53 kDa

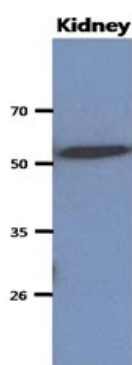
Images



ARG57010 anti-CNDP2 antibody [15E5] ICC/IF image

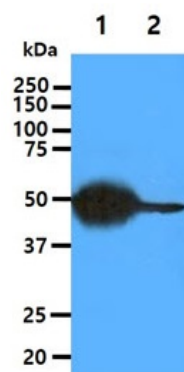
Immunofluorescence: HeLa cell line stained with ARG57010 anti-CNDP2 antibody [15E5] at 1:100 (Green).

DAPI (Blue) for nucleus staining.



ARG57010 anti-CNDP2 antibody [15E5] WB image

Western blot: 40 µg of Mouse kidney stained with ARG57010 anti-CNDP2 antibody [15E5] at 1:1000.



ARG57010 anti-CNDP2 antibody [15E5] WB image

Western blot: 40 µg of 1) Mouse Liver Tissue lysate, 2) HepG2 cell lysate stained with ARG57010 anti-CNDP2 antibody [15E5] at 1:1000.