

ARG57011 anti-MRRF antibody [7D10]

Package: 50 µl
Store at: -20°C

Summary

Product Description	Mouse Monoclonal antibody [7D10] recognizes MRRF
Tested Reactivity	Hu
Tested Application	WB
Host	Mouse
Clonality	Monoclonal
Clone	7D10
Isotype	IgG1, kappa
Target Name	MRRF
Species	Human
Immunogen	Recombinant fragment around aa. 56-262 of Human MRRF.
Conjugation	Un-conjugated
Alternate Names	RRF; MTRRF; Ribosome-releasing factor, mitochondrial; Ribosome-recycling factor, mitochondrial; MRFF

Application Instructions

Application table	Application	Dilution
	WB	1:1000
Application Note	* The dilutions indicate recommended starting dilutions and the optimal dilutions or concentrations should be determined by the scientist.	

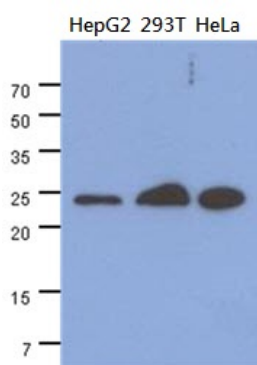
Properties

Form	Liquid
Purification	Purification with Protein A.
Buffer	PBS (pH 7.4), 0.02% Sodium azide and 10% Glycerol.
Preservative	0.02% Sodium azide
Stabilizer	10% Glycerol
Concentration	1 mg/ml
Storage instruction	For continuous use, store undiluted antibody at 2-8°C for up to a week. For long-term storage, aliquot and store at -20°C. Storage in frost free freezers is not recommended. Avoid repeated freeze/thaw cycles. Suggest spin the vial prior to opening. The antibody solution should be gently mixed before use.
Note	For laboratory research only, not for drug, diagnostic or other use.

Bioinformation

Database links	GeneID: 92399 Human Swiss-port # Q96E11 Human
Gene Symbol	MRRF
Gene Full Name	mitochondrial ribosome recycling factor
Function	Responsible for the release of ribosomes from messenger RNA at the termination of protein biosynthesis. May increase the efficiency of translation by recycling ribosomes from one round of translation to another (By similarity). [UniProt]
Calculated Mw	29 kDa

Images



ARG57011 anti-MRRF antibody [7D10] WB image

Western blot: 40 µg of HepG2, 293T and HeLa cell lysates stained with ARG57011 anti-MRRF antibody [7D10] at 1:1000.