

ARG57053 anti-alpha Actinin antibody [1D10]

Package: 50 µl
Store at: -20°C

Summary

Product Description	Mouse Monoclonal antibody [1D10] recognizes alpha Actinin
Tested Reactivity	Hu
Tested Application	FACS, WB
Host	Mouse
Clonality	Monoclonal
Clone	1D10
Isotype	IgG2a, kappa
Target Name	alpha Actinin
Species	Human
Immunogen	Recombinant fragment around aa. 1-249 of Human alpha Actinin.
Conjugation	Un-conjugated
Alternate Names	F-actin cross-linking protein; Non-muscle alpha-actinin-1; BDPLT15; Alpha-actinin cytoskeletal isoform; Alpha-actinin-1

Application Instructions

Application table	Application	Dilution
	FACS	Assay-dependent
	WB	Assay-dependent
Application Note	* The dilutions indicate recommended starting dilutions and the optimal dilutions or concentrations should be determined by the scientist.	

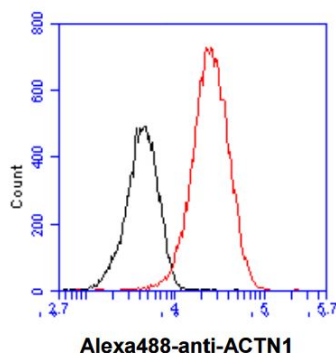
Properties

Form	Liquid
Purification	Purification with Protein A.
Buffer	PBS (pH 7.4), 0.02% Sodium azide and 10% Glycerol.
Preservative	0.02% Sodium azide
Stabilizer	10% Glycerol
Concentration	1 mg/ml
Storage instruction	For continuous use, store undiluted antibody at 2-8°C for up to a week. For long-term storage, aliquot and store at -20°C. Storage in frost free freezers is not recommended. Avoid repeated freeze/thaw cycles. Suggest spin the vial prior to opening. The antibody solution should be gently mixed before use.
Note	For laboratory research only, not for drug, diagnostic or other use.

Bioinformation

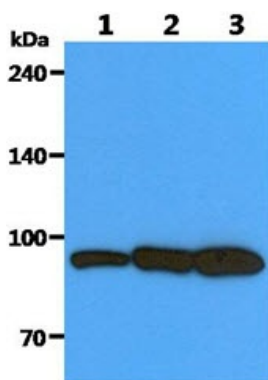
Database links	GeneID: 87 Human Swiss-port # P12814 Human
Gene Symbol	ACTN1
Gene Full Name	actinin, alpha 1
Background	Alpha actinins belong to the spectrin gene superfamily which represents a diverse group of cytoskeletal proteins, including the alpha and beta spectrins and dystrophins. Alpha actinin is an actin-binding protein with multiple roles in different cell types. In nonmuscle cells, the cytoskeletal isoform is found along microfilament bundles and adherens-type junctions, where it is involved in binding actin to the membrane. In contrast, skeletal, cardiac, and smooth muscle isoforms are localized to the Z-disc and analogous dense bodies, where they help anchor the myofibrillar actin filaments. This gene encodes a nonmuscle, cytoskeletal, alpha actinin isoform and maps to the same site as the structurally similar erythroid beta spectrin gene. Three transcript variants encoding different isoforms have been found for this gene. [provided by RefSeq, Jul 2008]
Function	F-actin cross-linking protein which is thought to anchor actin to a variety of intracellular structures. This is a bundling protein. [UniProt]
Calculated Mw	103 kDa

Images



ARG57053 anti-alpha Actinin antibody [1D10] FACS image

Flow Cytometry: HeLa cell line stained with ARG57053 anti-alpha Actinin antibody [1D10] at 2-5 μg for 1×10^6 cells (red line). Secondary antibody: Goat anti-Mouse IgG Alexa fluor 488 conjugate. Isotype control antibody was Mouse IgG (black line).



ARG57053 anti-alpha Actinin antibody [1D10] WB image

Western blot: 40 μg of 1) PC-3 cell lysate, 2) Balb/3T3 cell lysate, 3) A549 cell lysate stained with ARG57053 anti-alpha Actinin antibody [1D10] at 1:1000.