

## ARG57081 anti-NCS1 antibody [11B8]

Package: 50 µl  
Store at: -20°C

### Summary

Product Description	Mouse Monoclonal antibody [11B8] recognizes NCS1
Tested Reactivity	Hu
Tested Application	FACS, WB
Host	Mouse
Clonality	Monoclonal
Clone	11B8
Isotype	IgG1, kappa
Target Name	NCS1
Species	Human
Immunogen	Recombinant fragment around aa. 1-190 of Human NCS1.
Conjugation	Un-conjugated
Alternate Names	Frequenin homolog; NCS-1; Frequenin-like protein; Neuronal calcium sensor 1; Frequenin-like ubiquitous protein; FLUP; FREQ

### Application Instructions

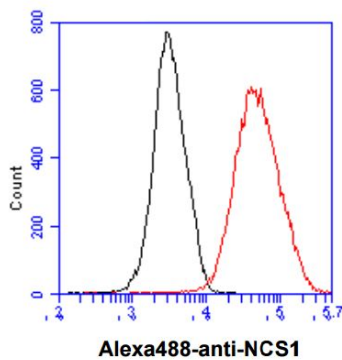
Application table	Application	Dilution
	FACS	Assay-dependent
	WB	Assay-dependent
Application Note	* The dilutions indicate recommended starting dilutions and the optimal dilutions or concentrations should be determined by the scientist.	

### Properties

Form	Liquid
Purification	Purification with Protein A.
Buffer	PBS (pH 7.4), 0.02% Sodium azide and 10% Glycerol.
Preservative	0.02% Sodium azide
Stabilizer	10% Glycerol
Concentration	1 mg/ml
Storage instruction	For continuous use, store undiluted antibody at 2-8°C for up to a week. For long-term storage, aliquot and store at -20°C. Storage in frost free freezers is not recommended. Avoid repeated freeze/thaw cycles. Suggest spin the vial prior to opening. The antibody solution should be gently mixed before use.
Note	For laboratory research only, not for drug, diagnostic or other use.

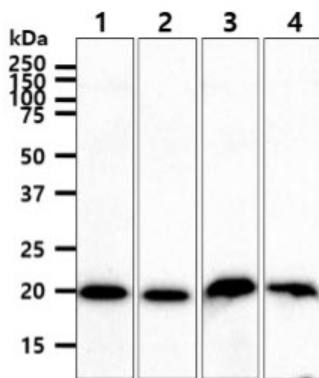
Database links	<a href="#">GeneID: 23413 Human</a> <a href="#">Swiss-port # P62166 Human</a>
Gene Symbol	NCS1
Gene Full Name	neuronal calcium sensor 1
Background	This gene is a member of the neuronal calcium sensor gene family, which encode calcium-binding proteins expressed predominantly in neurons. The protein encoded by this gene regulates G protein-coupled receptor phosphorylation in a calcium-dependent manner and can substitute for calmodulin. The protein is associated with secretory granules and modulates synaptic transmission and synaptic plasticity. Multiple transcript variants encoding different isoforms have been found for this gene. [provided by RefSeq, Jul 2008]
Function	Neuronal calcium sensor, regulator of G protein-coupled receptor phosphorylation in a calcium dependent manner. Directly regulates GRK1 (RHOK), but not GRK2 to GRK5. Can substitute for calmodulin (By similarity). Stimulates PI4KB kinase activity (By similarity). Involved in long-term synaptic plasticity through its interaction with PICK1 (By similarity). May also play a role in neuron differentiation through inhibition of the activity of N-type voltage-gated calcium channel (By similarity). [UniProt]
Calculated Mw	22 kDa

Images



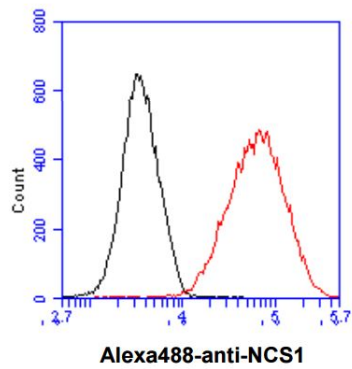
ARG57081 anti-NCS1 antibody [11B8] FACS image

Flow Cytometry: A549 cell line stained with ARG57081 anti-NCS1 antibody [11B8] at 2-5 µg for 1x10<sup>6</sup> cells (red line). Secondary antibody: Goat anti-Mouse IgG Alexa fluor 488 conjugate. Isotype control antibody was Mouse IgG (black line).



ARG57081 anti-NCS1 antibody [11B8] WB image

Western blot: 40 µg of 1) 293T cell lysate, 2) K562 cell lysate, 3) LaCap cell lysate, 4) HeLa cell lysate stained with ARG57081 anti-NCS1 antibody [11B8] at 1:1000.



#### ARG57081 anti-NCS1 antibody [11B8] FACS image

Flow Cytometry: HeLa cell line stained with ARG57081 anti-NCS1 antibody [11B8] at 2-5  $\mu\text{g}$  for  $1 \times 10^6$  cells (red line). Secondary antibody: Goat anti-Mouse IgG Alexa fluor 488 conjugate. Isotype control antibody was Mouse IgG (black line).