

ARG57085 anti-PPME1 antibody [29G3]

Package: 50 µl
Store at: -20°C

Summary

Product Description	Mouse Monoclonal antibody [29G3] recognizes PPME1
Tested Reactivity	Hu
Tested Application	WB
Host	Mouse
Clonality	Monoclonal
Clone	29G3
Isotype	IgG1, kappa
Target Name	PPME1
Species	Human
Immunogen	Recombinant fragment around aa. 1-386 of Human PPME1.
Conjugation	Un-conjugated
Alternate Names	PME-1; EC 3.1.1.89; Protein phosphatase methylesterase 1

Application Instructions

Application table	Application	Dilution
	WB	Assay-dependent
Application Note	* The dilutions indicate recommended starting dilutions and the optimal dilutions or concentrations should be determined by the scientist.	

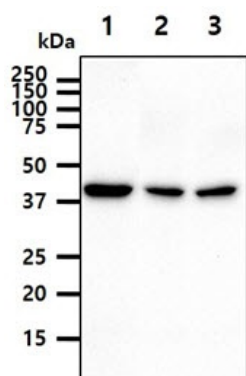
Properties

Form	Liquid
Purification	Purification with Protein A.
Buffer	PBS (pH 7.4), 0.02% Sodium azide and 10% Glycerol.
Preservative	0.02% Sodium azide
Stabilizer	10% Glycerol
Concentration	1 mg/ml
Storage instruction	For continuous use, store undiluted antibody at 2-8°C for up to a week. For long-term storage, aliquot and store at -20°C. Storage in frost free freezers is not recommended. Avoid repeated freeze/thaw cycles. Suggest spin the vial prior to opening. The antibody solution should be gently mixed before use.
Note	For laboratory research only, not for drug, diagnostic or other use.

Bioinformation

Database links	GeneID: 51400 Human Swiss-port # Q9Y570 Human
Gene Symbol	PPME1
Gene Full Name	protein phosphatase methylesterase 1
Background	This gene encodes a protein phosphatase methylesterase localized to the nucleus. The encoded protein acts on the protein phosphatase-2A catalytic subunit and supports the ERK pathway through dephosphorylation of regulatory proteins. It plays a role in malignant glioma progression. Alternative splicing results in multiple transcript variants. [provided by RefSeq, Oct 2012]
Function	Demethylates proteins that have been reversibly carboxymethylated. Demethylates PPP2CB (in vitro) and PPP2CA. Binding to PPP2CA displaces the manganese ion and inactivates the enzyme. [UniProt]
Calculated Mw	42 kDa
PTM	Phosphorylated by SIK1 following increases in intracellular sodium, leading to dissociation from the protein phosphatase 2A (PP2A) complex and subsequent dephosphorylation of sodium/potassium-transporting ATPase ATP1A1.

Images



ARG57085 anti-PPME1 antibody [29G3] WB image

Western blot: 40 µg of 1) HeLa cell lysate, 2) K562 cell lysate, 3) A549 cell lysate stained with ARG57085 anti-PPME1 antibody [29G3] at 1:1000.