

## ARG57095 anti-CK1 alpha antibody [2E2]

Package: 50 µl  
Store at: -20°C

### Summary

Product Description	Mouse Monoclonal antibody [2E2] recognizes CK1 alpha
Tested Reactivity	Hu
Tested Application	WB
Host	Mouse
Clonality	Monoclonal
Clone	2E2
Isotype	IgG2b, kappa
Target Name	CK1 alpha
Species	Human
Immunogen	Recombinant fragment around aa. 1-337 of Human Casein Kinase 1 alpha
Conjugation	Un-conjugated
Alternate Names	CK1a; PRO2975; HEL-S-77p; CKIa; HLCDGP1; CK1; CKI-alpha; EC 2.7.11.1; Casein kinase I isoform alpha

### Application Instructions

Application table	Application	Dilution
	WB	1:1000 - 1:2000
Application Note	* The dilutions indicate recommended starting dilutions and the optimal dilutions or concentrations should be determined by the scientist.	

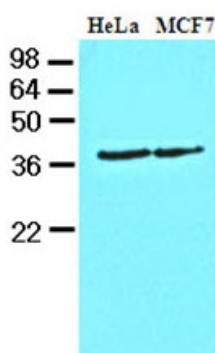
### Properties

Form	Liquid
Purification	Purification with Protein G.
Buffer	PBS (pH 7.4), 0.02% Sodium azide and 10% Glycerol.
Preservative	0.02% Sodium azide
Stabilizer	10% Glycerol
Concentration	1 mg/ml
Storage instruction	For continuous use, store undiluted antibody at 2-8°C for up to a week. For long-term storage, aliquot and store at -20°C. Storage in frost free freezers is not recommended. Avoid repeated freeze/thaw cycles. Suggest spin the vial prior to opening. The antibody solution should be gently mixed before use.
Note	For laboratory research only, not for drug, diagnostic or other use.

## Bioinformation

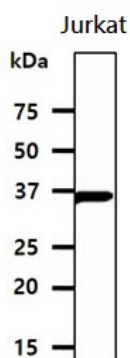
Database links	<a href="#">GeneID: 1452 Human</a> <a href="#">Swiss-port # P48729 Human</a>
Gene Symbol	CSNK1A1
Gene Full Name	casein kinase 1, alpha 1
Function	Casein kinases are operationally defined by their preferential utilization of acidic proteins such as caseins as substrates. It can phosphorylate a large number of proteins. Participates in Wnt signaling. Phosphorylates CTNNB1 at 'Ser-45'. May phosphorylate PER1 and PER2. May play a role in segregating chromosomes during mitosis. [UniProt]
Calculated Mw	39 kDa

## Images



ARG57095 anti-CK1 alpha antibody [2E2] WB image

Western blot: 40 µg of HeLa and MCF7 cell lysates stained with ARG57095 anti-CK1 alpha antibody [2E2] at 1:1000.



ARG57095 anti-CK1 alpha antibody [2E2] WB image

Western blot: 40 µg of Jurkat cell lysate stained with ARG57095 anti-CK1 alpha antibody [2E2] at 1:1000.