

ARG57107 anti-CtBP1 antibody [4D6]

Package: 50 µl
Store at: -20°C

Summary

Product Description	Mouse Monoclonal antibody [4D6] recognizes CtBP1
Tested Reactivity	Hu
Tested Application	WB
Host	Mouse
Clonality	Monoclonal
Clone	4D6
Isotype	IgG2b, kappa
Target Name	CtBP1
Species	Human
Immunogen	Recombinant fragment around aa. 1-440 of Human CtBP1
Conjugation	Un-conjugated
Alternate Names	EC 1.1.1.-; CtBP1; BARS; C-terminal-binding protein 1

Application Instructions

Application table	Application	Dilution
	WB	1:500
Application Note	* The dilutions indicate recommended starting dilutions and the optimal dilutions or concentrations should be determined by the scientist.	

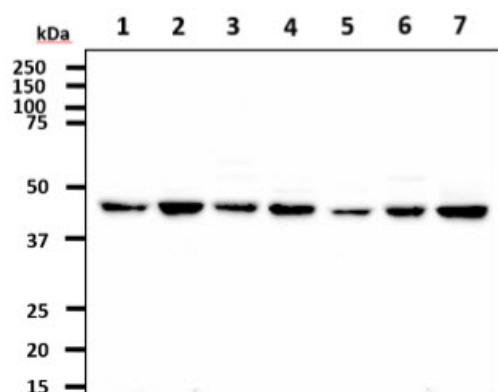
Properties

Form	Liquid
Purification	Purification with Protein G.
Buffer	PBS (pH 7.4), 0.02% Sodium azide and 10% Glycerol.
Preservative	0.02% Sodium azide
Stabilizer	10% Glycerol
Concentration	1 mg/ml
Storage instruction	For continuous use, store undiluted antibody at 2-8°C for up to a week. For long-term storage, aliquot and store at -20°C. Storage in frost free freezers is not recommended. Avoid repeated freeze/thaw cycles. Suggest spin the vial prior to opening. The antibody solution should be gently mixed before use.
Note	For laboratory research only, not for drug, diagnostic or other use.

Bioinformation

Database links	GeneID: 1487 Human Swiss-port # Q13363 Human
Gene Symbol	CTBP1
Gene Full Name	C-terminal binding protein 1
Background	This gene encodes a protein that binds to the C-terminus of adenovirus E1A proteins. This phosphoprotein is a transcriptional repressor and may play a role during cellular proliferation. This protein and the product of a second closely related gene, CTBP2, can dimerize. Both proteins can also interact with a polycomb group protein complex which participates in regulation of gene expression during development. Alternative splicing of transcripts from this gene results in multiple transcript variants. [provided by RefSeq, Jul 2008]
Function	Corepressor targeting diverse transcription regulators such as GLIS2 or BCL6. Has dehydrogenase activity. Involved in controlling the equilibrium between tubular and stacked structures in the Golgi complex. Functions in brown adipose tissue (BAT) differentiation. [UniProt]
Calculated Mw	48 kDa
PTM	The level of phosphorylation appears to be regulated during the cell cycle. Phosphorylation by HIPK2 on Ser-422 induces proteasomal degradation. ADP-ribosylated; when cells are exposed to brefeldin A. Sumoylation on Lys-428 is promoted by the E3 SUMO-protein ligase CBX4.

Images



ARG57107 anti-CtBP1 antibody [4D6] WB image

Western blot: 40 µg of 1) HeLa, 2) NIH3T3, 3) 293T, 4) AGS, 5) Raji, 6) A549, and 7) Jurkat cell lysates stained with ARG57107 anti-CtBP1 antibody [4D6] at 1:500.