

ARG57142 anti-Beclin 1 antibody [45E8]

Package: 50 µl
Store at: -20°C

Summary

Product Description	Mouse Monoclonal antibody [45E8] recognizes Beclin 1
Tested Reactivity	Hu
Tested Application	FACS, ICC/IF, WB
Host	Mouse
Clonality	Monoclonal
Clone	45E8
Isotype	IgG2b, kappa
Target Name	Beclin 1
Species	Human
Immunogen	Recombinant fragment around aa. 1-450 of Human Beclin-1
Conjugation	Un-conjugated
Alternate Names	BECN1; Beclin 1; VPS30; ATG6; Coiled-Coil Myosin-Like BCL2-Interacting Protein; Beclin 1, Autophagy Related; Beclin-1; Beclin 1 (Coiled-Coil, Moesin-Like BCL2 Interacting Protein); Beclin 1 (Coiled-Coil, Moesin-Like BCL2-Interacting Protein); ATG6 Autophagy Related 6 Homolog (S. Cerevisiae); Testis Secretory Sperm-Binding Protein Li 215e; ATG6 Autophagy Related 6 Homolog; Beclin1-Gamma; Protein GT197; Beclin1-Beta; Beclin1; GT197

Application Instructions

Application table	Application	Dilution
	FACS	Assay-dependent
	ICC/IF	Assay-dependent
	WB	Assay-dependent
Application Note	* The dilutions indicate recommended starting dilutions and the optimal dilutions or concentrations should be determined by the scientist.	

Properties

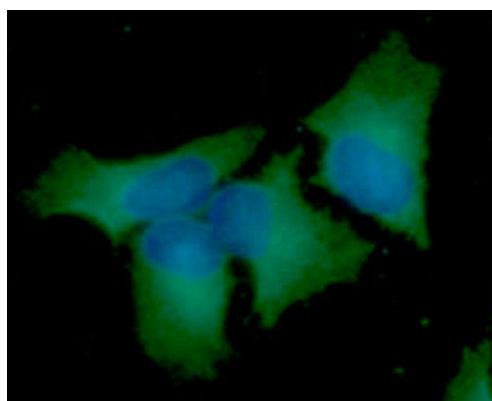
Form	Liquid
Purification	Purification with Protein A.
Buffer	PBS (pH 7.4), 0.02% Sodium azide and 10% Glycerol.
Preservative	0.02% Sodium azide
Stabilizer	10% Glycerol
Concentration	1 mg/ml

Storage instruction	For continuous use, store undiluted antibody at 2-8°C for up to a week. For long-term storage, aliquot and store at -20°C. Storage in frost free freezers is not recommended. Avoid repeated freeze/thaw cycles. Suggest spin the vial prior to opening. The antibody solution should be gently mixed before use.
Note	For laboratory research only, not for drug, diagnostic or other use.

Bioinformation

Database links	GeneID: 8678 Human Swiss-port # Q14457 Human
Gene Symbol	BECN1
Gene Full Name	beclin 1, autophagy related
Background	This gene encodes a protein that regulates autophagy, a catabolic process of degradation induced by starvation. The encoded protein is a component of the phosphatidylinositol-3-kinase (PI3K) complex which mediates vesicle-trafficking processes. This protein is thought to play a role in multiple cellular processes, including tumorigenesis, neurodegeneration and apoptosis. Alternative splicing results in multiple transcript variants. [provided by RefSeq, Sep 2015]
Function	Protects against infection by a neurovirulent strain of Sindbis virus. May play a role in antiviral host defense. [UniProt]
Highlight	Related products: Beclin 1 antibodies ; Beclin 1 Duos / Panels ;
Research Area	Cancer antibody; Cell Death antibody; Gene Regulation antibody; Metabolism antibody; Microbiology and Infectious Disease antibody; Autophagy Study antibody
Calculated Mw	52 kDa
PTM	Acetylation, Isopeptide bond, Phosphoprotein, Ubl conjugation. [UniProt]
Cellular Localization	Cytoplasm, Cytoplasmic vesicle, Endoplasmic reticulum, Endosome, Golgi apparatus, Membrane, Mitochondrion, Nucleus. [UniProt]

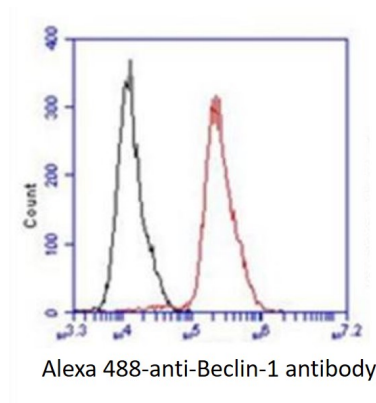
Images



ARG57142 anti-Beclin 1 antibody [45E8] ICC/IF image

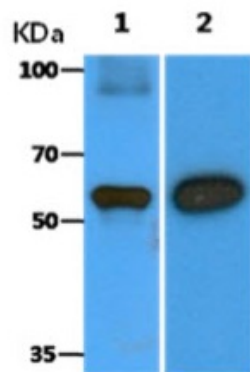
Immunofluorescence: HeLa cells line stained with ARG57142 anti-Beclin 1 antibody [45E8] at 1:100 (Green).

DAPI (Blue) for nucleus staining.



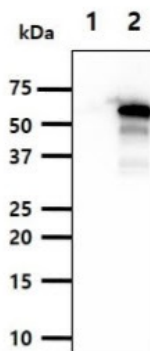
ARG57142 anti-Beclin 1 antibody [45E8] FACS image

Flow Cytometry: HeLa cell line stained with ARG57142 anti-Beclin 1 antibody [45E8] at 2-5 μ g for 1×10^6 cells (red line). Secondary antibody: Goat anti-Mouse IgG Alexa fluor 488 conjugate. Isotype control antibody: Mouse IgG (black line).



ARG57142 anti-Beclin 1 antibody [45E8] WB image

Western blot: 10 ng of 1) Recombinant Human BECN1 protein, and 2) Balb/3T3 cell lysates stained with ARG57142 anti-Beclin 1 antibody [45E8] at 1:5000.



ARG57142 anti-Beclin 1 antibody [45E8] WB image

Western blot: 10 μ g of 1) 293T, and 2) BECN1 Transfected 293T cell lysate stained with ARG57142 anti-Beclin 1 antibody [45E8] at 1:1000.