

ARG57326 anti-Centrin 1 antibody

Package: 100 µl
Store at: -20°C

Summary

Product Description	Rabbit Polyclonal antibody recognizes Centrin 1
Tested Reactivity	Hu, Ms, Rat
Tested Application	WB
Host	Rabbit
Clonality	Polyclonal
Isotype	IgG
Target Name	Centrin 1
Species	Human
Immunogen	Recombinant Protein of Human Centrin 1.
Conjugation	Un-conjugated
Alternate Names	Caltractin isoform 2; CETN; CEN1; Centrin-1

Application Instructions

Application table	Application	Dilution
	WB	1:500-1:2000
Application Note	* The dilutions indicate recommended starting dilutions and the optimal dilutions or concentrations should be determined by the scientist.	
Positive Control	MCF7	

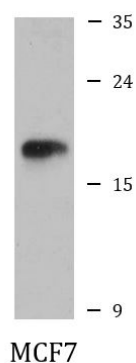
Properties

Form	Liquid
Purification	Affinity purification with immunogen.
Buffer	PBS (pH 7.3), 0.02% Sodium azide and 50% Glycerol.
Preservative	0.02% Sodium azide
Stabilizer	50% Glycerol
Storage instruction	For continuous use, store undiluted antibody at 2-8°C for up to a week. For long-term storage, aliquot and store at -20°C. Storage in frost free freezers is not recommended. Avoid repeated freeze/thaw cycles. Suggest spin the vial prior to opening. The antibody solution should be gently mixed before use.
Note	For laboratory research only, not for drug, diagnostic or other use.

Bioinformation

Gene Symbol	CETN1
Gene Full Name	centrin, EF-hand protein, 1
Background	The protein encoded by this gene plays important roles in the determination of centrosome position and segregation, and in the process of microtubule severing. This protein is localized to the centrosome of interphase cells, and redistributes to the region of the spindle poles during mitosis, reflecting the dynamic behavior of the centrosome during the cell cycle. [provided by RefSeq, Jan 2015]
Function	Plays a fundamental role in microtubule-organizing center structure and function. [UniProt]
Calculated Mw	20 kDa

Images



ARG57326 anti-Centrin 1 antibody WB image

Western blot: MCF7 cell lysate stained with ARG57326 anti-Centrin 1 antibody.