

ARG57346 anti-CCBL1 antibody

Package: 100 µl
Store at: -20°C

Summary

Product Description	Rabbit Polyclonal antibody recognizes CCBL1
Tested Reactivity	Hu, Ms, Rat
Tested Application	ICC/IF, WB
Host	Rabbit
Clonality	Polyclonal
Isotype	IgG
Target Name	CCBL1
Species	Human
Immunogen	Recombinant Protein of Human CCBL1.
Conjugation	Un-conjugated
Alternate Names	Kynurenine--oxoglutarate transaminase 1; KAT1; GTK; EC 2.6.1.64; Kynurenine aminotransferase I; EC 4.4.1.13; KATI; Glutamine--phenylpyruvate transaminase; Kynurenine--oxoglutarate transaminase I; EC 2.6.1.7; Glutamine transaminase K; Cysteine-S-conjugate beta-lyase

Application Instructions

Application table	Application	Dilution
	ICC/IF	1:50 - 1:200
	WB	1:500 - 1:2000
Application Note	* The dilutions indicate recommended starting dilutions and the optimal dilutions or concentrations should be determined by the scientist.	
Positive Control	SW620	

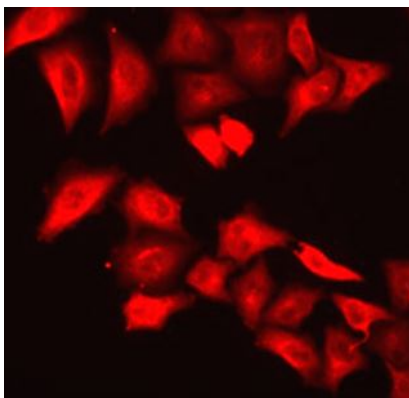
Properties

Form	Liquid
Purification	Affinity purification with immunogen.
Buffer	PBS (pH 7.3), 0.02% Sodium azide and 50% Glycerol.
Preservative	0.02% Sodium azide
Stabilizer	50% Glycerol
Storage instruction	For continuous use, store undiluted antibody at 2-8°C for up to a week. For long-term storage, aliquot and store at -20°C. Storage in frost free freezers is not recommended. Avoid repeated freeze/thaw cycles. Suggest spin the vial prior to opening. The antibody solution should be gently mixed before use.
Note	For laboratory research only, not for drug, diagnostic or other use.

Bioinformation

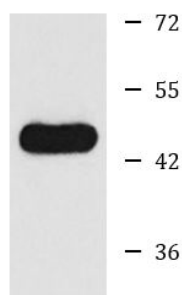
Gene Symbol	CCBL1
Gene Full Name	cysteine conjugate-beta lyase, cytoplasmic
Background	This gene encodes a cytosolic enzyme that is responsible for the metabolism of cysteine conjugates of certain halogenated alkenes and alkanes. This metabolism can form reactive metabolites leading to nephrotoxicity and neurotoxicity. Increased levels of this enzyme have been linked to schizophrenia. Multiple transcript variants that encode different isoforms have been identified for this gene. [provided by RefSeq, Jul 2008]
Function	Catalyzes the irreversible transamination of the L-tryptophan metabolite L-kynurenine to form kynurenic acid (KA). Metabolizes the cysteine conjugates of certain halogenated alkenes and alkanes to form reactive metabolites. Catalyzes the beta-elimination of S-conjugates and Se-conjugates of L-(seleno)cysteine, resulting in the cleavage of the C-S or C-Se bond. [UniProt]
Calculated Mw	48 kDa

Images



ARG57346 anti-CCBL1 antibody ICC/IF image

Immunofluorescence: HeLa cells stained with ARG57346 anti-CCBL1 antibody.



SW620

ARG57346 anti-CCBL1 antibody WB image

Western blot: SW620 cell lysate stained with ARG57346 anti-CCBL1 antibody.