

ARG57348 anti-CCT4 / TCP1 delta antibody

Package: 100 µl
Store at: -20°C

Summary

| | |
|---------------------|--|
| Product Description | Rabbit Polyclonal antibody recognizes CCT4 / TCP1 delta |
| Tested Reactivity | Hu, Ms, Rat |
| Tested Application | ICC/IF, WB |
| Host | Rabbit |
| Clonality | Polyclonal |
| Isotype | IgG |
| Target Name | CCT4 / TCP1 delta |
| Species | Human |
| Immunogen | Recombinant Protein of Human CCT4 / TCP1 delta. |
| Conjugation | Un-conjugated |
| Alternate Names | SRB; T-complex protein 1 subunit delta; CCT-DELTA; CCT-delta; Stimulator of TAR RNA-binding; TCP-1-delta; Cctd |

Application Instructions

| Application table | Application | Dilution |
|-------------------|--|----------------|
| | ICC/IF | 1:50 - 1:100 |
| | WB | 1:500 - 1:1000 |
| Application Note | * The dilutions indicate recommended starting dilutions and the optimal dilutions or concentrations should be determined by the scientist. | |
| Positive Control | THP-1 | |

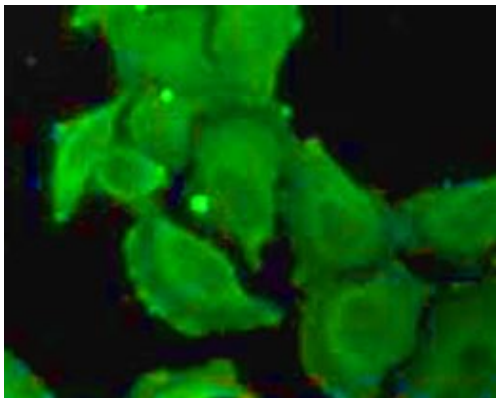
Properties

| | |
|---------------------|---|
| Form | Liquid |
| Purification | Affinity purification with immunogen. |
| Buffer | PBS (pH 7.3), 0.02% Sodium azide and 50% Glycerol. |
| Preservative | 0.02% Sodium azide |
| Stabilizer | 50% Glycerol |
| Storage instruction | For continuous use, store undiluted antibody at 2-8°C for up to a week. For long-term storage, aliquot and store at -20°C. Storage in frost free freezers is not recommended. Avoid repeated freeze/thaw cycles. Suggest spin the vial prior to opening. The antibody solution should be gently mixed before use. |
| Note | For laboratory research only, not for drug, diagnostic or other use. |

Bioinformation

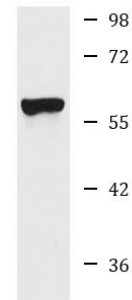
| | |
|----------------|---|
| Gene Symbol | CCT4 |
| Gene Full Name | chaperonin containing TCP1, subunit 4 (delta) |
| Background | The chaperonin containing TCP1 (MIM 186980) complex (CCT), also called the TCP1 ring complex, consists of 2 back-to-back rings, each containing 8 unique but homologous subunits, such as CCT4. CCT assists the folding of newly translated polypeptide substrates through multiple rounds of ATP-driven release and rebinding of partially folded intermediate forms. Substrates of CCT include the cytoskeletal proteins actin (see MIM 102560) and tubulin (see MIM 191130), as well as alpha-transducin (MIM 139330) (Won et al., 1998 [PubMed 9819444]).[supplied by OMIM, Mar 2008] |
| Function | Molecular chaperone; assists the folding of proteins upon ATP hydrolysis. As part of the BBS/CCT complex may play a role in the assembly of BBSome, a complex involved in ciliogenesis regulating transports vesicles to the cilia. Known to play a role, in vitro, in the folding of actin and tubulin. [UniProt] |
| Calculated Mw | 58 kDa |

Images



ARG57348 anti-CCT4 / TCP1 delta antibody ICC/IF image

Immunofluorescence: HeLa cells stained with ARG57348 anti-CCT4 / TCP1 delta antibody.



THP-1

ARG57348 anti-CCT4 / TCP1 delta antibody WB image

Western blot: THP-1 cell lysate stained with ARG57348 anti-CCT4 / TCP1 delta antibody.