

ARG57375 anti-CEP83 / CCDC41 antibody

Package: 100 µl
Store at: -20°C

Summary

Product Description	Rabbit Polyclonal antibody recognizes CEP83 / CCDC41
Tested Reactivity	Hu, Ms
Tested Application	WB
Host	Rabbit
Clonality	Polyclonal
Isotype	IgG
Target Name	CEP83 / CCDC41
Species	Human
Immunogen	Recombinant Protein of Human CEP83 / CCDC41.
Conjugation	Un-conjugated
Alternate Names	Coiled-coil domain-containing protein 41; Centrosomal protein of 83 kDa; Renal carcinoma antigen NY-REN-58; CCDC41; NY-REN-58; NPHP18; Cep83

Application Instructions

Application table	Application	Dilution
	WB	1:500 - 1:2000
Application Note	* The dilutions indicate recommended starting dilutions and the optimal dilutions or concentrations should be determined by the scientist.	
Positive Control	Mouse lung	

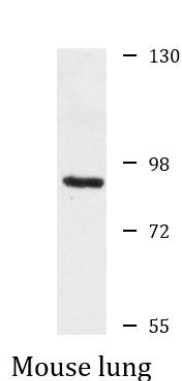
Properties

Form	Liquid
Purification	Affinity purification with immunogen.
Buffer	PBS (pH 7.3), 0.02% Sodium azide and 50% Glycerol.
Preservative	0.02% Sodium azide
Stabilizer	50% Glycerol
Storage instruction	For continuous use, store undiluted antibody at 2-8°C for up to a week. For long-term storage, aliquot and store at -20°C. Storage in frost free freezers is not recommended. Avoid repeated freeze/thaw cycles. Suggest spin the vial prior to opening. The antibody solution should be gently mixed before use.
Note	For laboratory research only, not for drug, diagnostic or other use.

Bioinformation

Gene Symbol	CEP83
Gene Full Name	centrosomal protein 83kDa
Function	Component of the distal appendage region of the centriole involved in the initiation of primary cilium assembly. May collaborate with IFT20 in the trafficking of ciliary membrane proteins from the Golgi complex to the cilium during the initiation of primary cilium assembly. [UniProt]
Calculated Mw	83 kDa

Images



ARG57375 anti-CEP83 / CCDC41 antibody WB image

Western blot: Mouse lung lysate stained with ARG57375 anti-CEP83 / CCDC41 antibody.