

ARG57425 anti-BLT2 antibody

Package: 250 µl
Store at: -20°C

Summary

Product Description	Rabbit Polyclonal antibody recognizes BLT2
Tested Reactivity	Hu, Ms
Tested Application	WB
Host	Rabbit
Clonality	Polyclonal
Isotype	IgG
Target Name	BLT2
Species	Human
Immunogen	Synthetic peptide around the C-terminus of Human LTB4R2 / BLT2.
Conjugation	Un-conjugated
Alternate Names	NOP9; KPG_004; BLT2; LTB4 receptor JULF2; LTB4-R2; Seven transmembrane receptor BLTR2; Leukotriene B4 receptor BLT2; LTB4-R 2; BLTR2; JULF2; Leukotriene B4 receptor 2

Application Instructions

Application table	Application	Dilution
	WB	1:200
Application Note	* The dilutions indicate recommended starting dilutions and the optimal dilutions or concentrations should be determined by the scientist.	

Properties

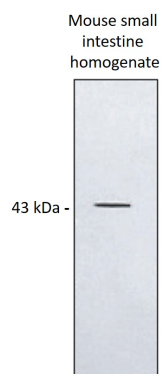
Form	Liquid
Purification	Affinity purification with immunogen.
Buffer	TBS (pH 7.4) and 5 mg/ml BSA.
Stabilizer	5 mg/ml BSA
Storage instruction	For continuous use, store undiluted antibody at 2-8°C for up to a week. For long-term storage, aliquot and store at -20°C or below. Storage in frost free freezers is not recommended. Avoid repeated freeze/thaw cycles. Suggest spin the vial prior to opening. The antibody solution should be gently mixed before use.
Note	For laboratory research only, not for drug, diagnostic or other use.

Bioinformation

Gene Symbol	LTB4R2
-------------	--------

Gene Full Name	leukotriene B4 receptor 2
Function	Low-affinity receptor for leukotrienes including leukotriene B4. Mediates chemotaxis of granulocytes and macrophages. The response is mediated via G-proteins that activate a phosphatidylinositol-calcium second messenger system. The rank order of affinities for the leukotrienes is LTB4 > 12-epi-LTB4 > LTB5 > LTB3. [UniProt]
Calculated Mw	38 kDa

Images



ARG57425 anti-BLT2 antibody WB image

Western blot: 40 µg of Mouse small intestine homogenate lysate stained with ARG57425 anti-BLT2 antibody.
