

## ARG57448 anti-SSB antibody

Package: 100 µl  
Store at: -20°C

### Summary

Product Description	Mouse Monoclonal antibody recognizes SSB
Tested Reactivity	Hu
Tested Application	WB
Specificity	This antibody detects endogenous levels of SSB and does not cross-react with related proteins.
Host	Mouse
Clonality	Monoclonal
Isotype	IgG1
Target Name	SSB
Species	Human
Immunogen	Purified recombinant Human SSB protein fragments expressed in E. coli.
Conjugation	Un-conjugated
Alternate Names	LARP3; Sjogren syndrome type B antigen; La; La ribonucleoprotein; Lupus La protein; La autoantigen; La/SSB; SS-B

### Application Instructions

Application table	Application	Dilution
	WB	1:1000
Application Note	* The dilutions indicate recommended starting dilutions and the optimal dilutions or concentrations should be determined by the scientist.	

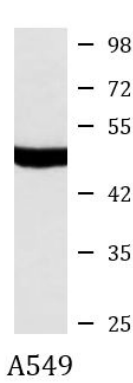
### Properties

Form	Liquid
Purification	Affinity purified.
Buffer	PBS (pH 7.4), 0.03% Proclin300 and 50% Glycerol.
Preservative	0.03% Proclin300
Stabilizer	50% Glycerol
Concentration	2.6 mg/ml
Storage instruction	For continuous use, store undiluted antibody at 2-8°C for up to a week. For long-term storage, aliquot and store at -20°C. Storage in frost free freezers is not recommended. Avoid repeated freeze/thaw cycles. Suggest spin the vial prior to opening. The antibody solution should be gently mixed before use.
Note	For laboratory research only, not for drug, diagnostic or other use.

Bioinformation

Gene Symbol	SSB
Gene Full Name	Sjogren syndrome antigen B (autoantigen La)
Background	The protein encoded by this gene is involved in diverse aspects of RNA metabolism, including binding and protecting poly(U) termini of nascent RNA polymerase III transcripts from exonuclease digestion, processing 5' and 3' ends of pre-tRNA precursors, acting as an RNA chaperone, and binding viral RNAs associated with hepatitis C virus. Autoantibodies reacting with this protein are found in the sera of patients with Sjogren syndrome and systemic lupus erythematosus. Alternative promoter usage results in two different transcript variants which encode the same protein. [provided by RefSeq, Jun 2014]
Function	Binds to the 3' poly(U) terminus of nascent RNA polymerase III transcripts, protecting them from exonuclease digestion and facilitating their folding and maturation. [UniProt]
Calculated Mw	47 kDa
PTM	Phosphorylated. The phosphorylation sites are at the C-terminal part of the protein. The N-terminus is blocked.
Cellular Localization	Nucleus.

Images



ARG57448 anti-SSB antibody WB image

Western blot: A549 cell lysate stained with ARG57448 anti-SSB antibody at 1:1000 dilution.