

ARG57463 anti-PSMB8 / LMP7 antibody

Package: 100 µl
Store at: -20°C

Summary

Product Description	Mouse Monoclonal antibody recognizes PSMB8 / LMP7
Tested Reactivity	Hu, Rat
Tested Application	IHC-P, WB
Host	Mouse
Clonality	Monoclonal
Isotype	IgG1
Target Name	PSMB8 / LMP7
Species	Human
Immunogen	Purified recombinant fragment of Human PSMB8 expressed in E. coli.
Conjugation	Un-conjugated
Alternate Names	Proteasome subunit beta-5i; Multicatalytic endopeptidase complex subunit C13; Proteasome subunit beta type-8; D6S216E; Really interesting new gene 10 protein; JMP; LMP7; NKJO; PSMB5i; Proteasome component C13; EC 3.4.25.1; RING10; Low molecular mass protein 7; ALDD; D6S216; Macropain subunit C13

Application Instructions

Application table	Application	Dilution
	IHC-P	1:200 - 1:1000
	WB	1:500 - 1:2000
Application Note	* The dilutions indicate recommended starting dilutions and the optimal dilutions or concentrations should be determined by the scientist.	

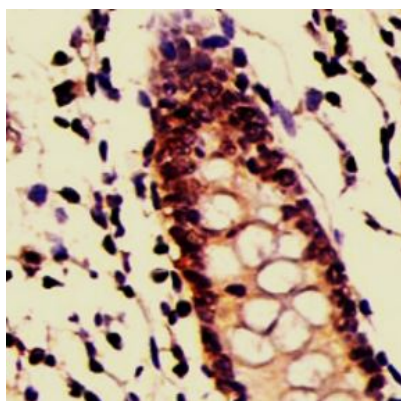
Properties

Form	Liquid
Purification	Ascitic fluid
Buffer	Ascitic fluid and 0.03% Sodium azide.
Preservative	0.03% Sodium azide
Storage instruction	For continuous use, store undiluted antibody at 2-8°C for up to a week. For long-term storage, aliquot and store at -20°C or below. Storage in frost free freezers is not recommended. Avoid repeated freeze/thaw cycles. Suggest spin the vial prior to opening. The antibody solution should be gently mixed before use.
Note	For laboratory research only, not for drug, diagnostic or other use.

Bioinformation

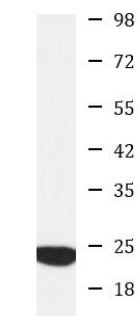
Gene Symbol	PSMB8
Gene Full Name	proteasome subunit beta 8
Background	<p>The proteasome is a multicatalytic proteinase complex with a highly ordered ring-shaped 20S core structure. The core structure is composed of 4 rings of 28 non-identical subunits; 2 rings are composed of 7 alpha subunits and 2 rings are composed of 7 beta subunits. Proteasomes are distributed throughout eukaryotic cells at a high concentration and cleave peptides in an ATP/ubiquitin-dependent process in a non-lysosomal pathway. An essential function of a modified proteasome, the immunoproteasome, is the processing of class I MHC peptides. This gene encodes a member of the proteasome B-type family, also known as the T1B family, that is a 20S core beta subunit. This gene is located in the class II region of the MHC (major histocompatibility complex). Expression of this gene is induced by gamma interferon and this gene product replaces catalytic subunit 3 (proteasome beta 5 subunit) in the immunoproteasome. Proteolytic processing is required to generate a mature subunit. Two alternative transcripts encoding two isoforms have been identified; both isoforms are processed to yield the same mature subunit. [provided by RefSeq, Jul 2008]</p>
Function	<p>The proteasome is a multicatalytic proteinase complex which is characterized by its ability to cleave peptides with Arg, Phe, Tyr, Leu, and Glu adjacent to the leaving group at neutral or slightly basic pH. The proteasome has an ATP-dependent proteolytic activity. This subunit is involved in antigen processing to generate class I binding peptides. Replacement of PSMB5 by PSMB8 increases the capacity of the immunoproteasome to cleave model peptides after hydrophobic and basic residues. Acts as a major component of interferon gamma-induced sensitivity. Plays a key role in apoptosis via the degradation of the apoptotic inhibitor MCL1. May be involved in the inflammatory response pathway. In cancer cells, substitution of isoform 1 (E2) by isoform 2 (E1) results in immunoproteasome deficiency. Required for the differentiation of preadipocytes into adipocytes. [UniProt]</p>
Calculated Mw	30 kDa
PTM	Autocleaved. The resulting N-terminal Thr residue of the mature subunit is responsible for the nucleophile proteolytic activity.
Cellular Localization	Nucleus.

Images



ARG57463 anti-PSMB8 / LMP7 antibody IHC-P image

Immunohistochemistry: Paraffin-embedded Human colon tissue stained with ARG57463 anti-PSMB8 / LMP7 antibody.



MOLT-4

ARG57463 anti-PSMB8 / LMP7 antibody WB image

Western blot: MOLT-4 cell lysate stained with ARG57463 anti-PSMB8 / LMP7 antibody at 1:1000 dilution.