

## ARG57483 anti-p70 S6 Kinase antibody

Package: 100 µl  
Store at: -20°C

### Summary

Product Description	Rabbit Polyclonal antibody recognizes p70 S6 Kinase
Tested Reactivity	Hu, Ms, Rat
Tested Application	FACS, ICC/IF, IHC-P, IP, WB
Specificity	This antibody detects endogenous levels of total p70 S6 Kinase.
Host	Rabbit
Clonality	Polyclonal
Isotype	IgG
Target Name	p70 S6 Kinase
Species	Human
Immunogen	Synthetic peptide derived from Human p70 S6 Kinase.
Conjugation	Un-conjugated
Alternate Names	S6K-beta2; p70 ribosomal S6 kinase beta; Ribosomal protein S6 kinase beta-2; S6 kinase-related kinase; S6K-beta-2; p70-beta; p70 S6K-beta; p70 S6 kinase beta; p70S6Kb; STK14B; p70 S6KB; p70-S6K 2; P70-beta-1; P70-beta-2; S6K2; SRK; P70S6K2; KLS; Serine/threonine-protein kinase 14B; S6K-beta; P70-beta; p70(S6K)-beta; 70 kDa ribosomal protein S6 kinase 2; EC 2.7.11.1

### Application Instructions

Application table	Application	Dilution
	FACS	1:100
	ICC/IF	1:100 - 1:500
	IHC-P	1:50 - 1:200
	IP	1:50
	WB	1:1000 - 1:2000
	Application Note	* The dilutions indicate recommended starting dilutions and the optimal dilutions or concentrations should be determined by the scientist.

### Properties

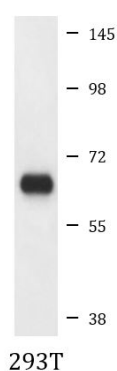
Form	Liquid
Purification	Purified by affinity chromatography.
Buffer	PBS (pH 7.4), 150mM NaCl, 0.02% Sodium azide and 50% Glycerol.
Preservative	0.02% Sodium azide
Stabilizer	50% Glycerol

Storage instruction	For continuous use, store undiluted antibody at 2-8°C for up to a week. For long-term storage, aliquot and store at -20°C. Storage in frost free freezers is not recommended. Avoid repeated freeze/thaw cycles. Suggest spin the vial prior to opening. The antibody solution should be gently mixed before use.
Note	For laboratory research only, not for drug, diagnostic or other use.

## Bioinformation

Gene Symbol	RPS6KB2
Gene Full Name	ribosomal protein S6 kinase, 70kDa, polypeptide 2
Background	This gene encodes a member of the RSK (ribosomal S6 kinase) family of serine/threonine kinases. This kinase contains a kinase catalytic domain and phosphorylates the S6 ribosomal protein and eukaryotic translation initiation factor 4B (eIF4B). Phosphorylation of S6 leads to an increase in protein synthesis and cell proliferation. [provided by RefSeq, Jan 2015]
Function	Phosphorylates specifically ribosomal protein S6. [UniProt]
Calculated Mw	53 kDa
PTM	Phosphorylated and activated by MTOR. Phosphorylation by PKC within the NLS in response to mitogenic stimuli causes cytoplasmic retention.

## Images



ARG57483 anti-p70 S6 Kinase antibody WB image

Western blot: 293T cell lysate stained with ARG57483 anti-p70 S6 Kinase antibody.