

ARG57499 anti-CHI3L2 antibody [2B5]

Package: 50 µl
Store at: -20°C

Summary

Product Description	Mouse Monoclonal antibody [2B5] recognizes CHI3L2
Tested Reactivity	Hu
Tested Application	FACS, WB
Host	Mouse
Clonality	Monoclonal
Clone	2B5
Isotype	IgG2b, kappa
Target Name	CHI3L2
Species	Human
Immunogen	Recombinant Human CHI3L2 (aa. 27-390) purified from E. coli.
Conjugation	Un-conjugated
Alternate Names	Chondrocyte protein 39; CHIL2; YKL-39; Chitinase-3-like protein 2; YKL39

Application Instructions

Application table	Application	Dilution
	FACS	2 - 5 µg/10 ⁶ cells
	WB	1:1000
Application Note	* The dilutions indicate recommended starting dilutions and the optimal dilutions or concentrations should be determined by the scientist.	

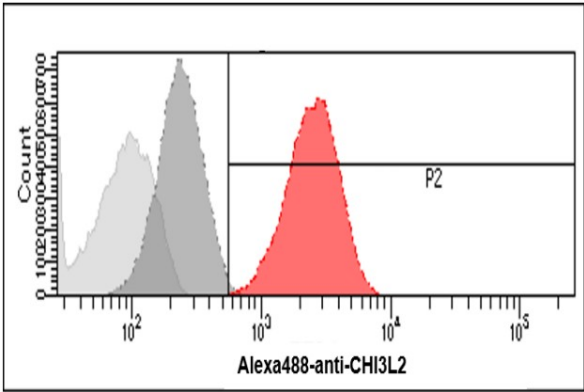
Properties

Form	Liquid
Purification	Purification with Protein A.
Buffer	PBS (pH 7.4), 0.02% Sodium azide and 10% Glycerol.
Preservative	0.02% Sodium azide
Stabilizer	10% Glycerol
Concentration	1 mg/ml
Storage instruction	For continuous use, store undiluted antibody at 2-8°C for up to a week. For long-term storage, aliquot and store at -20°C. Storage in frost free freezers is not recommended. Avoid repeated freeze/thaw cycles. Suggest spin the vial prior to opening. The antibody solution should be gently mixed before use.
Note	For laboratory research only, not for drug, diagnostic or other use.

Bioinformation

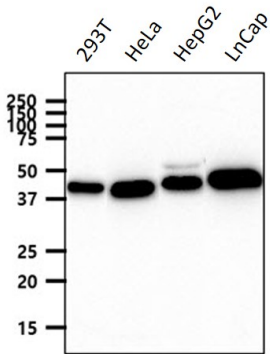
Gene Symbol	CHI3L2
Gene Full Name	chitinase 3-like 2
Background	The protein encoded by this gene is similar to bacterial chitinases but lacks chitinase activity. The encoded protein is secreted and is involved in cartilage biogenesis. Several transcript variants encoding different isoforms have been found for this gene. [provided by RefSeq, Apr 2012]
Function	Lectin that binds chitooligosaccharides and other glycans with high affinity, but not heparin. Has no chitinase activity. [UniProt]
Calculated Mw	44 kDa

Images



ARG57499 anti-CHI3L2 antibody [2B5] FACS image

Flow Cytometry: HeLa cells stained with ARG57499 anti-CHI3L2 antibody [2B5] at 2 - 5 μ g/ 10^6 cells (red). Goat anti-Mouse IgG (Alexa fluor 488) was used as the secondary antibody. Mouse monoclonal IgG was used as the isotype control (dark gray), cells without incubation with primary and secondary antibody was used as the negative control (light gray).



ARG57499 anti-CHI3L2 antibody [2B5] WB image

Western blot: 40 μ g of 293T, HeLa, HepG2 and LnCap cell lysates stained with ARG57499 anti-CHI3L2 antibody [2B5] at 1:1000 dilution.