

ARG57521 anti-EpCAM antibody

Package: 50 µl
Store at: -20°C

Summary

| | |
|---------------------|---|
| Product Description | Rabbit Polyclonal antibody recognizes EpCAM |
| Tested Reactivity | Hu, Ms |
| Tested Application | FACS, WB |
| Host | Rabbit |
| Clonality | Polyclonal |
| Isotype | IgG |
| Target Name | EpCAM |
| Immunogen | KLH-conjugated synthetic peptide corresponding to aa. 302-335 (C-terminus) of Mouse EpCAM. |
| Conjugation | Un-conjugated |
| Alternate Names | MIC18; EGP; Tumor-associated calcium signal transducer 1; Epithelial glycoprotein 314; KSA; Ep-CAM; Epithelial cell surface antigen; Adenocarcinoma-associated antigen; HNPCC8; Cell surface glycoprotein Trop-1; EGP40; TACSTD1; KS1/4; hEGP314; Major gastrointestinal tumor-associated protein GA733-2; M4S1; MK-1; Epithelial glycoprotein; KS 1/4 antigen; ESA; DIAR5; EGP314; Epithelial cell adhesion molecule; EGP-2; TROP1; CD antigen CD326 |

Application Instructions

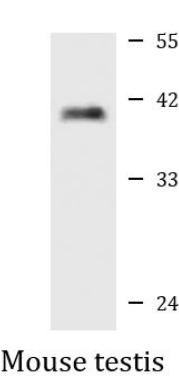
| | | |
|-------------------|--|----------|
| Application table | Application | Dilution |
| | FACS | 1:25 |
| | WB | 1:1000 |
| Application Note | * The dilutions indicate recommended starting dilutions and the optimal dilutions or concentrations should be determined by the scientist. | |
| Positive Control | Mouse testis | |

Properties

| | |
|---------------------|--|
| Form | Liquid |
| Purification | Purified. |
| Concentration | 0.5 mg/ml |
| Storage instruction | For continuous use, store undiluted antibody at 2-8°C for up to a week. For long-term storage, aliquot and store at -20°C or below. Storage in frost free freezers is not recommended. Avoid repeated freeze/thaw cycles. Suggest spin the vial prior to opening. The antibody solution should be gently mixed before use. |
| Note | For laboratory research only, not for drug, diagnostic or other use. |

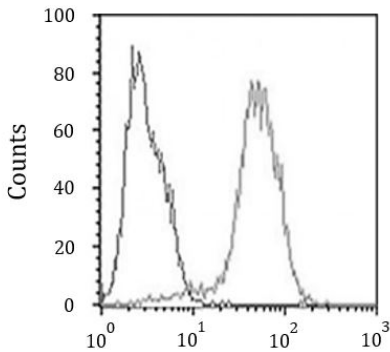
| | |
|-----------------------|--|
| Gene Symbol | EPCAM |
| Gene Full Name | epithelial cell adhesion molecule |
| Background | EpCAM is a carcinoma-associated antigen and is a member of a family that includes at least two type I membrane proteins. This antigen is expressed on most normal epithelial cells and gastrointestinal carcinomas and functions as a homotypic calcium-independent cell adhesion molecule. The antigen is being used as a target for immunotherapy treatment of human carcinomas. Mutations in this gene result in congenital tufting enteropathy. [provided by RefSeq, Dec 2008] |
| Function | EpCAM may act as a physical homophilic interaction molecule between intestinal epithelial cells (IECs) and intraepithelial lymphocytes (IELs) at the mucosal epithelium for providing immunological barrier as a first line of defense against mucosal infection. Plays a role in embryonic stem cells proliferation and differentiation. Up-regulates the expression of FABP5, MYC and cyclins A and E. [UniProt] |
| Research Area | Controls and Markers antibody; Epithelial Marker antibody; Circulating Tumor Cells BioMarker antibody |
| Calculated Mw | 35 kDa |
| PTM | Hyperglycosylated in carcinoma tissue as compared with autologous normal epithelia. Glycosylation at Asn-198 is crucial for protein stability. [UniProt] |
| Cellular Localization | Lateral cell membrane; Single-pass type I membrane protein. Cell junction, tight junction. Note=Colocalizes with CLDN7 at the lateral cell membrane and tight junction [UniProt] |

Images



ARG57521 anti-EpCAM antibody WB image

Western blot: 20 µg of Mouse testis lysate stained with ARG57521 anti-EpCAM antibody at 1:1000 dilution.



ARG57521 anti-EpCAM antibody FACS image

Flow Cytometry: HepG2 cells stained with ARG57521 anti-EpCAM antibody at 1:25 dilution (right histogram) compared to an isotype control of Rabbit IgG (left histogram), followed by incubation with Alexa Fluor® 488 labelled secondary antibody.