

## ARG57543 anti-FIS1 / TTC11 antibody [3B7]

Package: 50 µl  
Store at: -20°C

### Summary

Product Description	Mouse Monoclonal antibody [3B7] recognizes FIS1 / TTC11
Tested Reactivity	Hu
Tested Application	WB
Host	Mouse
Clonality	Monoclonal
Clone	3B7
Isotype	IgG1, kappa
Target Name	FIS1 / TTC11
Species	Human
Immunogen	Recombinant Human FIS1 / TTC11 (aa. 1-122) purified from E. coli.
Conjugation	Un-conjugated
Alternate Names	FIS1; Fission, Mitochondrial 1; H_NH0132A01.6; CGI-135; TTC11; Tetratricopeptide Repeat Protein 11; Tetratricopeptide Repeat Domain 11; Mitochondrial Fission 1 Protein; Mitochondrial Fission Molecule; TPR Repeat Protein 11; FIS1 Homolog; HFis1; Fission 1 (Mitochondrial Outer Membrane) Homolog (S. Cerevisiae); Fission 1 (Mitochondrial Outer Membrane) Homolog (Yeast); Fission 1 (Mitochondrial Outer Membrane) Homolog; CGI-135 Protein

### Application Instructions

Application table	Application	Dilution
	WB	1:1000
Application Note	* The dilutions indicate recommended starting dilutions and the optimal dilutions or concentrations should be determined by the scientist.	

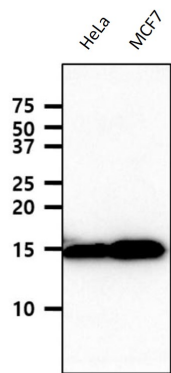
### Properties

Form	Liquid
Purification	Purification with Protein A.
Buffer	PBS (pH 7.4), 0.02% Sodium azide and 10% Glycerol.
Preservative	0.02% Sodium azide
Stabilizer	10% Glycerol
Concentration	1 mg/ml
Storage instruction	For continuous use, store undiluted antibody at 2-8°C for up to a week. For long-term storage, aliquot and store at -20°C. Storage in frost free freezers is not recommended. Avoid repeated freeze/thaw cycles. Suggest spin the vial prior to opening. The antibody solution should be gently mixed before use.

Bioinformation

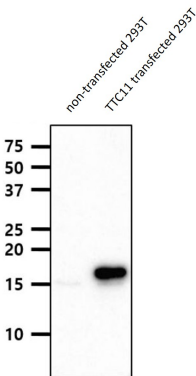
Gene Symbol	FIS1
Gene Full Name	Fission, Mitochondrial 1
Background	Enables identical protein binding activity. Involved in several processes, including calcium-mediated signaling using intracellular calcium source; cellular calcium ion homeostasis; and mitochondrion organization. Acts upstream of or within mitochondrion morphogenesis. Located in mitochondrion and peroxisome. Is integral component of mitochondrial outer membrane and integral component of peroxisomal membrane. Part of protein-containing complex. Biomarker of Alzheimer's disease. [provided by Alliance of Genome Resources, Apr 2022]
Function	Involved in the fragmentation of the mitochondrial network and its perinuclear clustering. [UniProt]
Calculated Mw	17 kDa
PTM	Ubiquitinated by MARCH5. [UniProt]
Cellular Localization	Membrane, Mitochondrion, Mitochondrion outer membrane, Peroxisome. [UniProt]

Images



ARG57543 anti-FIS1 / TTC11 antibody [3B7] WB image

Western blot: 40 µg of HeLa and MCF7 cell lysates stained with ARG57543 anti-FIS1 / TTC11 antibody [3B7] at 1:1000 dilution.



ARG57543 anti-FIS1 / TTC11 antibody [3B7] WB image

Western blot: 20 µg of non-transfected and TTC11 transfected 293T cell lysates stained with ARG57543 anti-FIS1 / TTC11 antibody [3B7] at 1:1000 dilution.