

## ARG57552 anti-ZO1 antibody

Package: 50 µg  
Store at: -20°C

### Summary

Product Description	Rabbit Polyclonal antibody recognizes ZO1
Tested Reactivity	Hu, Ms, Rat
Tested Application	FACS, ICC/IF, IHC-P, WB
Host	Rabbit
Clonality	Polyclonal
Isotype	IgG
Target Name	ZO1
Species	Human
Immunogen	Partial recombinant protein around aa. 1178-1527 of Human ZO-1.
Conjugation	Un-conjugated
Alternate Names	Zonula occludens protein 1; Tight junction protein ZO-1; Tight junction protein 1; Zona occludens protein 1; ZO-1

### Application Instructions

Application table	Application	Dilution
	FACS	1 - 3 µg/10 <sup>6</sup> cells
	ICC/IF	1 - 5 µg/ml
	IHC-P	1 - 5 µg/ml
	WB	0.5 - 1 µg/ml
Application Note	IHC-P: Antigen Retrieval: Boil tissue section in Citrate buffer (pH 6.0). * The dilutions indicate recommended starting dilutions and the optimal dilutions or concentrations should be determined by the scientist.	
Observed Size	~ 194 kDa	

### Properties

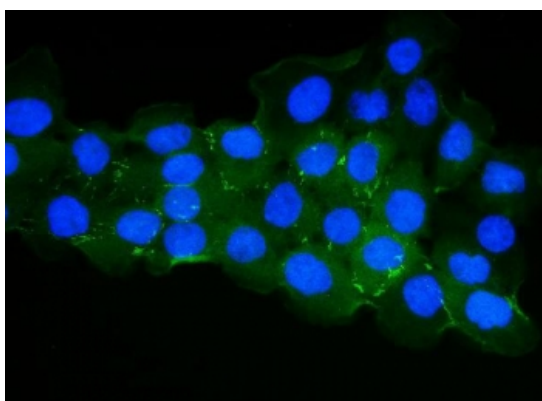
Form	Liquid
Purification	Affinity purification with immunogen.
Buffer	PBS, 0.025% Sodium azide and 2.5% BSA.
Preservative	0.025% Sodium azide
Stabilizer	2.5% BSA
Concentration	0.5 mg/ml

Storage instruction	For continuous use, store undiluted antibody at 2-8°C for up to a week. For long-term storage, aliquot and store at -20°C or below. Storage in frost free freezers is not recommended. Avoid repeated freeze/thaw cycles. Suggest spin the vial prior to opening. The antibody solution should be gently mixed before use.
Note	For laboratory research only, not for drug, diagnostic or other use.

## Bioinformation

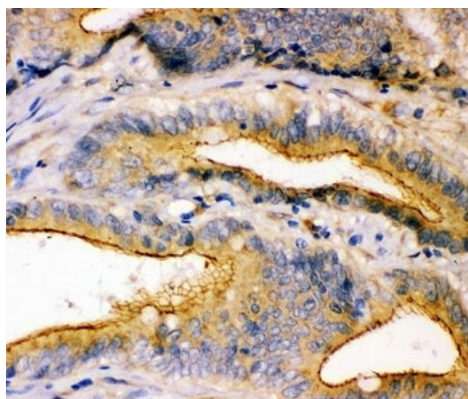
Gene Symbol	TJP1
Gene Full Name	tight junction protein 1
Background	This gene encodes a protein located on a cytoplasmic membrane surface of intercellular tight junctions. The encoded protein may be involved in signal transduction at cell-cell junctions. Alternative splicing of this gene results in multiple transcript variants. [provided by RefSeq, Jul 2014]
Function	The N-terminal may be involved in transducing a signal required for tight junction assembly, while the C-terminal may have specific properties of tight junctions. The alpha domain might be involved in stabilizing junctions. Plays a role in the regulation of cell migration by targeting CDC42BPB to the leading edge of migrating cells. [UniProt]
Calculated Mw	195 kDa
PTM	Phosphorylated. Dephosphorylated by PTPRJ. [UniProt]

## Images



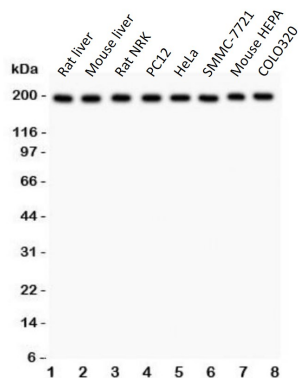
ARG57552 anti-ZO1 antibody ICC/IF image

Immunofluorescence: A431 cells stained with ARG57552 anti-ZO1 antibody (green). DAPI (blue) for nuclear staining.



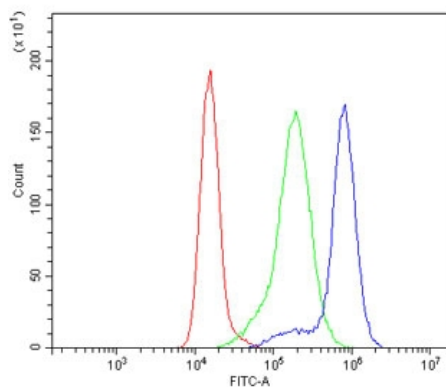
ARG57552 anti-ZO1 antibody IHC-P image

Immunohistochemistry: Paraffin-embedded Human intestinal cancer tissue stained with ARG57552 anti-ZO1 antibody. Antigen Retrieval: Boil tissue section in Citrate buffer (pH 6.0).



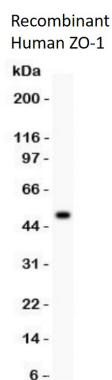
ARG57552 anti-ZO1 antibody WB image

Western blot: 1) Rat liver, 2) Mouse liver, 3) Rat NRK, 4) PC12, 5) HeLa, 6) SMMC-7721, 7) Mouse HEPA, 8) COLO320 lysates stained with ARG57552 anti-ZO1 antibody.



ARG57552 anti-ZO1 antibody FACS image

Flow Cytometry: K562 cells were blocked with goat sera and stained with ARG57552 anti-ZO1 antibody at 1  $\mu$ g/ $10^6$  cells (blue); Cells alone (red); Isotype control (green).



ARG57552 anti-ZO1 antibody WB image

Western blot: 0.5 ng of recombinant Human ZO-1 protein stained with ARG57552 anti-ZO1 antibody.