

ARG57561 anti-COPS6 antibody

Package: 100 µl
Store at: -20°C

Summary

Product Description	Rabbit Polyclonal antibody recognizes COPS6
Tested Reactivity	Hu, Ms, Rat
Tested Application	ICC/IF, WB
Host	Rabbit
Clonality	Polyclonal
Isotype	IgG
Target Name	COPS6
Species	Human
Immunogen	Recombinant protein of Human COPS6.
Conjugation	Un-conjugated
Alternate Names	Vpr-interacting protein; Signalosome subunit 6; COP9 signalosome complex subunit 6; MOV34 homolog; SGN6; CSN6; JAB1-containing signalosome subunit 6; MOV34-34KD; hVIP

Application Instructions

Predict Reactivity Note	Human						
Application table	<table> <tr> <th>Application</th><th>Dilution</th></tr> <tr> <td>ICC/IF</td><td>1:50 - 1:200</td></tr> <tr> <td>WB</td><td>1:500 - 1:2000</td></tr> </table>	Application	Dilution	ICC/IF	1:50 - 1:200	WB	1:500 - 1:2000
Application	Dilution						
ICC/IF	1:50 - 1:200						
WB	1:500 - 1:2000						
Application Note	* The dilutions indicate recommended starting dilutions and the optimal dilutions or concentrations should be determined by the scientist.						
Positive Control	Mouse heart						
Observed Size	36 kDa						

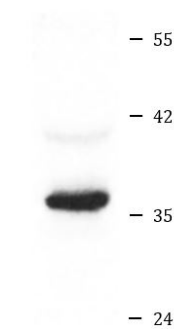
Properties

Form	Liquid
Purification	Affinity purified.
Buffer	PBS (pH 7.3), 0.02% Sodium azide and 50% Glycerol.
Preservative	0.02% Sodium azide
Stabilizer	50% Glycerol
Storage instruction	For continuous use, store undiluted antibody at 2-8°C for up to a week. For long-term storage, aliquot and store at -20°C. Storage in frost free freezers is not recommended. Avoid repeated freeze/thaw cycles. Suggest spin the vial prior to opening. The antibody solution should be gently mixed before use.

Bioinformation

Gene Symbol	COPS6
Gene Full Name	COP9 signalosome subunit 6
Background	The protein encoded by this gene is one of the eight subunits of COP9 signalosome, a highly conserved protein complex that functions as an important regulator in multiple signaling pathways. The structure and function of COP9 signalosome is similar to that of the 19S regulatory particle of 26S proteasome. COP9 signalosome has been shown to interact with SCF-type E3 ubiquitin ligases and act as a positive regulator of E3 ubiquitin ligases. This protein belongs to translation initiation factor 3 (eIF3) superfamily. It is involved in the regulation of cell cycle and likely to be a cellular cofactor for HIV-1 accessory gene product Vpr. [provided by RefSeq, Jul 2008]
Function	Component of the COP9 signalosome complex (CSN), a complex involved in various cellular and developmental processes. The CSN complex is an essential regulator of the ubiquitin (Ubl) conjugation pathway by mediating the deneddylation of the cullin subunits of SCF-type E3 ligase complexes, leading to decrease the Ubl ligase activity of SCF-type complexes such as SCF, CSA or DDB2. The complex is also involved in phosphorylation of p53/TP53, c-jun/JUN, IkappaBalpha/NFKBIA, ITPK1 and IRF8, possibly via its association with CK2 and PKD kinases. CSN-dependent phosphorylation of TP53 and JUN promotes and protects degradation by the Ubl system, respectively. Has some glucocorticoid receptor-responsive activity. Stabilizes RFWD2/COP1 through reducing RFWD2 auto-ubiquitination and decelerating RFWD2 turnover rate, hence regulates the ubiquitination of RFWD2 targets. [UniProt]
Calculated Mw	36 kDa

Images



Mouse heart

ARG57561 anti-COPS6 antibody WB image

Western blot: 25 µg of Mouse heart lysate stained with ARG57561 anti-COPS6 antibody at 1:1000 dilution.