

## ARG57581 anti-ME1 antibody

Package: 100 µl  
Store at: -20°C

### Summary

Product Description	Rabbit Polyclonal antibody recognizes ME1
Tested Reactivity	Hu, Ms, Rat
Tested Application	WB
Host	Rabbit
Clonality	Polyclonal
Isotype	IgG
Target Name	ME1
Species	Human
Immunogen	Recombinant protein of Human ME1.
Conjugation	Un-conjugated
Alternate Names	NADP-dependent malic enzyme; Malic enzyme 1; HUMNDME; EC 1.1.1.40; NADP-ME; MES

### Application Instructions

Predict Reactivity Note	Rat				
Application table	<table> <tr> <th>Application</th><th>Dilution</th></tr> <tr> <td>WB</td><td>1:1000 - 1:2000</td></tr> </table>	Application	Dilution	WB	1:1000 - 1:2000
Application	Dilution				
WB	1:1000 - 1:2000				
Application Note	* The dilutions indicate recommended starting dilutions and the optimal dilutions or concentrations should be determined by the scientist.				
Positive Control	LO2				
Observed Size	64 kDa				

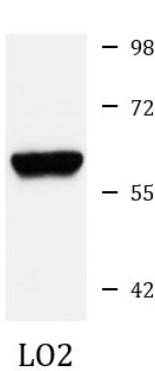
### Properties

Form	Liquid
Purification	Affinity purified.
Buffer	PBS (pH 7.3), 0.02% Sodium azide and 50% Glycerol.
Preservative	0.02% Sodium azide
Stabilizer	50% Glycerol
Storage instruction	For continuous use, store undiluted antibody at 2-8°C for up to a week. For long-term storage, aliquot and store at -20°C. Storage in frost free freezers is not recommended. Avoid repeated freeze/thaw cycles. Suggest spin the vial prior to opening. The antibody solution should be gently mixed before use.
Note	For laboratory research only, not for drug, diagnostic or other use.

Bioinformation

Gene Symbol	ME1
Gene Full Name	malic enzyme 1, NADP(+)-dependent, cytosolic
Background	This gene encodes a cytosolic, NADP-dependent enzyme that generates NADPH for fatty acid biosynthesis. The activity of this enzyme, the reversible oxidative decarboxylation of malate, links the glycolytic and citric acid cycles. The regulation of expression for this gene is complex. Increased expression can result from elevated levels of thyroid hormones or by higher proportions of carbohydrates in the diet. [provided by RefSeq, Jul 2008]
Calculated Mw	Isoform 1: 64 kDa Isoform 2: 55 kDa
Cellular Localization	Cytoplasm

Images



ARG57581 anti-ME1 antibody WB image

Western blot: 25 µg of LO2 cell lysate stained with ARG57581 anti-ME1 antibody at 1:1000 dilution.