

ARG57671
Rabbit anti-Human Light Chain antibody [RM129]Package: 50 µg
Store at: -20°C

Summary

Product Description	Rabbit Monoclonal antibody [RM129] recognizes Human Light Chain
Tested Reactivity	Hu
Tested Application	ELISA, FACS, ICC/IF, IHC-P
Host	Rabbit
Clonality	Monoclonal
Clone	RM129
Isotype	IgG
Target Name	Light Chain
Species	Human
Immunogen	Human IgG.
Conjugation	Un-conjugated

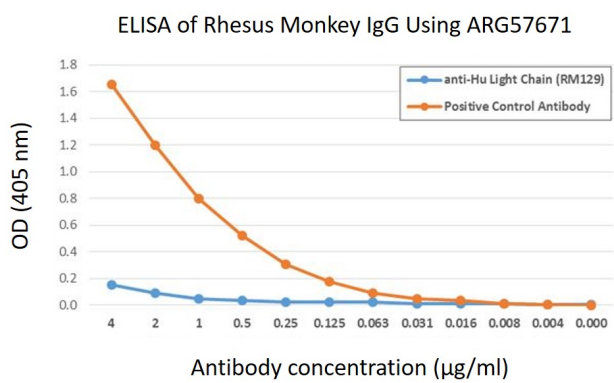
Application Instructions

Application table	Application	Dilution
	ELISA	0.1 - 0.5 µg/ml
	FACS	Assay - dependent
	ICC/IF	0.5 - 2 µg/ml
	IHC-P	0.5 - 2 µg/ml
Application Note	* The dilutions indicate recommended starting dilutions and the optimal dilutions or concentrations should be determined by the scientist.	

Properties

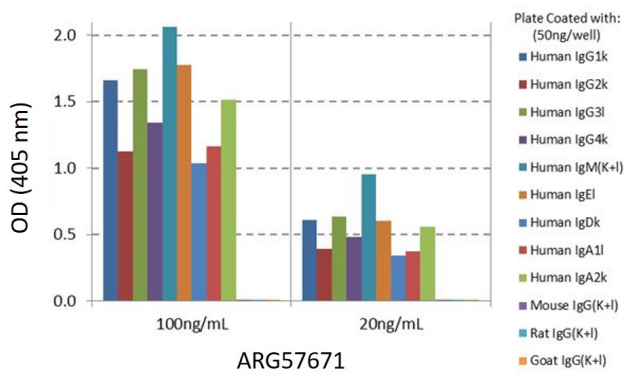
Form	Liquid
Purification	Purification with Protein A.
Buffer	PBS, 0.09% Sodium azide, 50% Glycerol and 1% BSA.
Preservative	0.09% Sodium azide
Stabilizer	50% Glycerol and 1% BSA
Concentration	1 mg/ml
Storage instruction	For continuous use, store undiluted antibody at 2-8°C for up to a week. For long-term storage, aliquot and store at -20°C. Storage in frost free freezers is not recommended. Avoid repeated freeze/thaw cycles. Suggest spin the vial prior to opening. The antibody solution should be gently mixed before use.

Images



ARG57671 Rabbit anti-Human Light Chain antibody [RM129] ELISA image

ELISA shows that ARG57671 Rabbit anti-Human Light Chain antibody [RM129] does not react to Monkey IgG. The plate was coated with Rhesus monkey IgG. A serial dilution of Clone RM129 and a monkey IgG reacting antibody (positive control) was used as the detection antibodies.



ARG57671 Rabbit anti-Human Light Chain antibody [RM129] ELISA image

ELISA shows that ARG57671 Rabbit anti-Human Light Chain antibody [RM129] reacts only to the kappa and lambda light chains in all Human immunoglobulins, and does not react to Mouse IgG, Rat IgG or Goat IgG.