

ARG57715 anti-RAP1A + RAP1B antibody

Package: 100 µl
Store at: -20°C

Summary

Product Description	Rabbit Polyclonal antibody recognizes RAP1A + RAP1B
Tested Reactivity	Hu, Ms, Rat
Tested Application	IHC-P, WB
Host	Rabbit
Clonality	Polyclonal
Isotype	IgG
Target Name	RAP1A + RAP1B
Species	Human
Immunogen	Synthetic peptide from Human RAP1A.
Conjugation	Un-conjugated
Alternate Names	Ras-related protein Krev-1; C21KG; SMGP21; Ras-related protein Rap-1A; RAP1; KREV1; KREV-1; G-22K; GTP-binding protein smg p21A; K-REV; RAL1B

Application Instructions

Application table	Application	Dilution
	IHC-P	1:50 - 1:200
	WB	1:500 - 1:2000
Application Note	* The dilutions indicate recommended starting dilutions and the optimal dilutions or concentrations should be determined by the scientist.	
Positive Control	Mouse lung	
Observed Size	21 kDa	

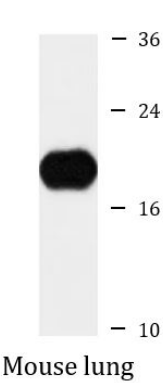
Properties

Form	Liquid
Purification	Affinity purified.
Buffer	PBS (pH 7.3), 0.02% Sodium azide and 50% Glycerol.
Preservative	0.02% Sodium azide
Stabilizer	50% Glycerol
Storage instruction	For continuous use, store undiluted antibody at 2-8°C for up to a week. For long-term storage, aliquot and store at -20°C. Storage in frost free freezers is not recommended. Avoid repeated freeze/thaw cycles. Suggest spin the vial prior to opening. The antibody solution should be gently mixed before use.
Note	For laboratory research only, not for drug, diagnostic or other use.

Bioinformation

Gene Symbol	RAP1A; RAP1B
Gene Full Name	RAP1A, member of RAS oncogene family; RAP1B, member of RAS oncogene family
Background	This gene encodes a member of the Ras family of small GTPases. The encoded protein undergoes a change in conformational state and activity, depending on whether it is bound to GTP or GDP. This protein is activated by several types of guanine nucleotide exchange factors (GEFs), and inactivated by two groups of GTPase-activating proteins (GAPs). The activation status of the encoded protein is therefore affected by the balance of intracellular levels of GEFs and GAPs. The encoded protein regulates signaling pathways that affect cell proliferation and adhesion, and may play a role in tumor malignancy. Pseudogenes of this gene have been defined on chromosomes 14 and 17. Alternative splicing results in multiple transcript variants. [provided by RefSeq, May 2014]
Function	Induces morphological reversion of a cell line transformed by a Ras oncogene. Counteracts the mitogenic function of Ras, at least partly because it can interact with Ras GAPs and RAF in a competitive manner. Together with ITGB1BP1, regulates KRIT1 localization to microtubules and membranes. Plays a role in nerve growth factor (NGF)-induced neurite outgrowth. Plays a role in the regulation of embryonic blood vessel formation. Involved in the establishment of basal endothelial barrier function. May be involved in the regulation of the vascular endothelial growth factor receptor KDR expression at endothelial cell-cell junctions. [UniProt]
Calculated Mw	RAP1A and RAP1B: 21 kDa
Cellular Localization	Cell membrane, Lipid-anchor, Cytoplasm, perinuclear region, Cell junction, Early endosome. [UniProt]

Images



ARG57715 anti-RAP1A + RAP1B antibody WB image

Western blot: 25 µg of Mouse lung lysate stained with ARG57715 anti-RAP1A + RAP1B antibody at 1:1000 dilution.