

ARG57756 anti-HCLS1 antibody

Package: 100 µl
Store at: -20°C

Summary

Product Description	Rabbit Polyclonal antibody recognizes HCLS1
Tested Reactivity	Hu, Ms
Tested Application	IHC-P, WB
Host	Rabbit
Clonality	Polyclonal
Isotype	IgG
Target Name	HCLS1
Species	Human
Immunogen	Recombinant fusion protein corresponding to aa. 1-280 of Human HCLS1 (NP_005326.2).
Conjugation	Un-conjugated
Alternate Names	p75; LckBP1; Hematopoietic cell-specific LYN substrate 1; HS1; Hematopoietic lineage cell-specific protein; CTTNL; lckBP1

Application Instructions

Application table	Application	Dilution
	IHC-P	1:50 - 1:200
	WB	1:500 - 1:2000
Application Note	* The dilutions indicate recommended starting dilutions and the optimal dilutions or concentrations should be determined by the scientist.	
Positive Control	Jurkat	

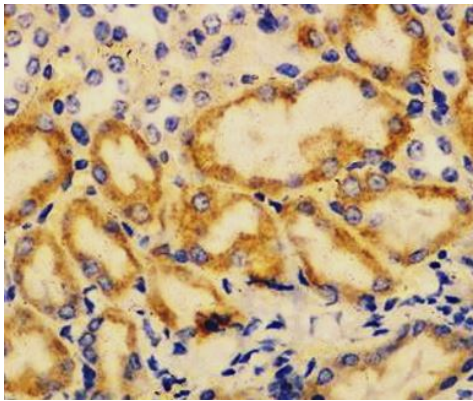
Properties

Form	Liquid
Purification	Affinity purified.
Buffer	PBS (pH 7.3), 0.02% Sodium azide and 50% Glycerol.
Preservative	0.02% Sodium azide
Stabilizer	50% Glycerol
Storage instruction	For continuous use, store undiluted antibody at 2-8°C for up to a week. For long-term storage, aliquot and store at -20°C. Storage in frost free freezers is not recommended. Avoid repeated freeze/thaw cycles. Suggest spin the vial prior to opening. The antibody solution should be gently mixed before use.
Note	For laboratory research only, not for drug, diagnostic or other use.

Bioinformation

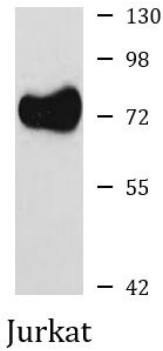
Gene Symbol	HCLS1
Gene Full Name	hematopoietic cell-specific Lyn substrate 1
Function	Substrate of the antigen receptor-coupled tyrosine kinase. Plays a role in antigen receptor signaling for both clonal expansion and deletion in lymphoid cells. May also be involved in the regulation of gene expression. [UniProt]
Calculated Mw	54 kDa
PTM	Phosphorylated by FES (By similarity). Phosphorylated by LYN, FYN and FGR after cross-linking of surface IgM on B-cells. Phosphorylation by LYN, FYN and FGR requires prior phosphorylation by SYK or FES. [UniProt]
Cellular Localization	Cytoplasm, Membrane, Mitochondrion, Peripheral membrane protein. [UniProt]

Images



ARG57756 anti-HCLS1 antibody IHC-P image

Immunohistochemistry: Paraffin-embedded Mouse kidney stained with ARG57756 anti-HCLS1 antibody at 1:100 dilution.



ARG57756 anti-HCLS1 antibody WB image

Western blot: 25 µg of Jurkat cell lysate stained with ARG57756 anti-HCLS1 antibody at 1:1000 dilution.