

## ARG57824 anti-XRCC1 antibody

Package: 100 µl  
Store at: -20°C

### Summary

Product Description	Rabbit Polyclonal antibody recognizes XRCC1
Tested Reactivity	Hu, Ms, Rat
Tested Application	ICC/IF, IHC-P, WB
Host	Rabbit
Clonality	Polyclonal
Isotype	IgG
Target Name	XRCC1
Species	Human
Immunogen	Synthetic peptide of Human XRCC1.
Conjugation	Un-conjugated
Alternate Names	X-ray repair cross-complementing protein 1; DNA repair protein XRCC1; RCC

### Application Instructions

Application table	Application	Dilution
	ICC/IF	1:50 - 1:200
	IHC-P	1:50 - 1:200
	WB	1:500 - 1:2000
Application Note	* The dilutions indicate recommended starting dilutions and the optimal dilutions or concentrations should be determined by the scientist.	

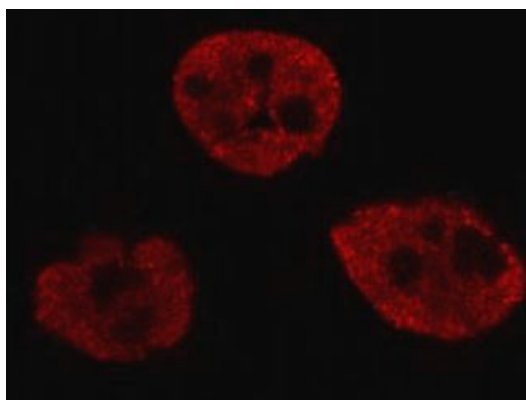
### Properties

Form	Liquid
Purification	Affinity purified.
Buffer	PBS (pH 7.4), 150mM NaCl, 0.02% Sodium azide and 50% Glycerol.
Preservative	0.02% Sodium azide
Stabilizer	50% Glycerol
Storage instruction	For continuous use, store undiluted antibody at 2-8°C for up to a week. For long-term storage, aliquot and store at -20°C. Storage in frost free freezers is not recommended. Avoid repeated freeze/thaw cycles. Suggest spin the vial prior to opening. The antibody solution should be gently mixed before use.
Note	For laboratory research only, not for drug, diagnostic or other use.

## Bioinformation

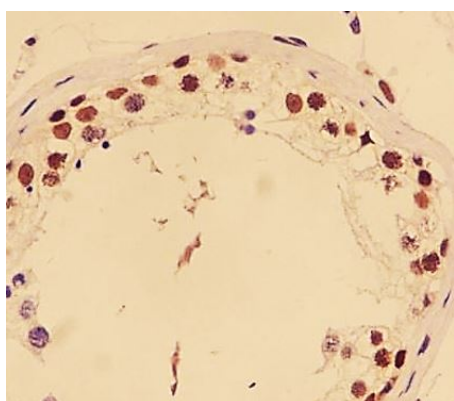
Gene Symbol	XRCC1
Gene Full Name	X-ray repair complementing defective repair in Chinese hamster cells 1
Background	The protein encoded by this gene is involved in the efficient repair of DNA single-strand breaks formed by exposure to ionizing radiation and alkylating agents. This protein interacts with DNA ligase III, polymerase beta and poly (ADP-ribose) polymerase to participate in the base excision repair pathway. It may play a role in DNA processing during meogenesis and recombination in germ cells. A rare microsatellite polymorphism in this gene is associated with cancer in patients of varying radiosensitivity. [provided by RefSeq, Jul 2008]
Function	Corrects defective DNA strand-break repair and sister chromatid exchange following treatment with ionizing radiation and alkylating agents. [UniProt]
Calculated Mw	69 kDa
PTM	Phosphorylation of Ser-371 causes dimer dissociation. Phosphorylation by CK2 promotes interaction with APTX and APLF.  Sumoylated. [UniProt]
Cellular Localization	Nucleus. [UniProt]

## Images



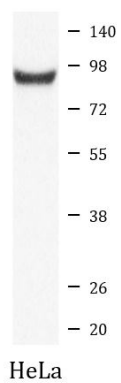
ARG57824 anti-XRCC1 antibody ICC/IF image

Immunofluorescence: HeLa cells stained with ARG57824 anti-XRCC1 antibody.



ARG57824 anti-XRCC1 antibody IHC-P image

Immunohistochemistry: Paraffin-embedded Human testis tissue stained with ARG57824 anti-XRCC1 antibody.



#### ARG57824 anti-XRCC1 antibody WB image

Western blot: HeLa cell lysate stained with ARG57824 anti-XRCC1 antibody.