

ARG57829 anti-BMP2 antibody

Package: 100 µl
Store at: -20°C

Summary

Product Description	Rabbit Polyclonal antibody recognizes BMP2
Tested Reactivity	Hu, Ms, Rat
Tested Application	ICC/IF, IHC-P, WB
Host	Rabbit
Clonality	Polyclonal
Isotype	IgG
Target Name	BMP2
Species	Human
Immunogen	Recombinant protein of Human BMP2.
Conjugation	Un-conjugated
Alternate Names	BDA2; BMP2A; BMP-2; Bone morphogenetic protein 2A; Bone morphogenetic protein 2; BMP-2A

Application Instructions

Application table	Application	Dilution
	ICC/IF	1:50 - 1:100
	IHC-P	1:50 - 1:100
	WB	1:500 - 1:1000
Application Note	<p>IHC-P: Antigen Retrieval: It is recommended using microwave antigen retrieval (3 X 3 min, with 5 min interval) boiling in 0.01M pH 7.2 PBS. (Antigen Retrieval buffer, 0.01M pH 9.0 Tris-EDTA or 0.01M citrate buffer pH 6.0 may also be used.)</p> <p>* The dilutions indicate recommended starting dilutions and the optimal dilutions or concentrations should be determined by the scientist.</p>	
Positive Control	HeLa	
Observed Size	~ 45 kDa	

Properties

Form	Liquid
Purification	Affinity purified.
Buffer	PBS (pH 7.3), 0.02% Sodium azide and 50% Glycerol.
Preservative	0.02% Sodium azide
Stabilizer	50% Glycerol
Storage instruction	For continuous use, store undiluted antibody at 2-8°C for up to a week. For long-term storage, aliquot and store at -20°C. Storage in frost free freezers is not recommended. Avoid repeated freeze/thaw

cycles. Suggest spin the vial prior to opening. The antibody solution should be gently mixed before use.

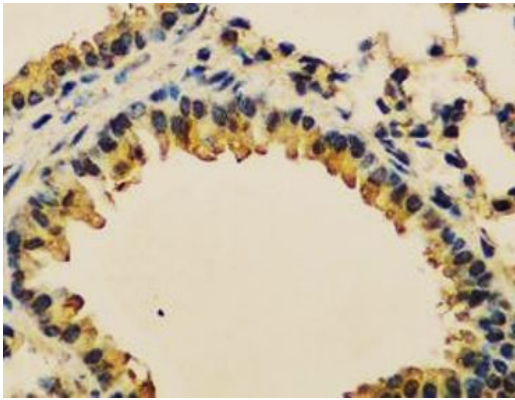
Note

For laboratory research only, not for drug, diagnostic or other use.

Bioinformation

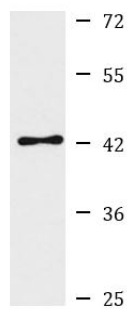
Gene Symbol	BMP2
Gene Full Name	bone morphogenetic protein 2
Background	The protein encoded by this gene belongs to the transforming growth factor-beta (TGFB) superfamily. The encoded protein acts as a disulfide-linked homodimer and induces bone and cartilage formation. [provided by RefSeq, Jul 2008]
Function	Induces cartilage and bone formation. [UniProt]
Calculated Mw	45 kDa
Cellular Localization	Secreted. [UniProt]

Images



ARG57829 anti-BMP2 antibody IHC-P image

Immunohistochemistry: Paraffin-embedded Mouse lung stained with ARG57829 anti-BMP2 antibody at 1:200 dilution.



HeLa

ARG57829 anti-BMP2 antibody WB image

Western blot: 25 µg of HeLa cell lysate stained with ARG57829 anti-BMP2 antibody at 1:1000 dilution.