

## ARG57852 anti-Presenilin 2 / PS2 antibody

Package: 100 µl  
Store at: -20°C

### Summary

Product Description	Rabbit Polyclonal antibody recognizes Presenilin 2 / PS2
Tested Reactivity	Hu, Ms, Rat
Tested Application	ICC/IF, WB
Host	Rabbit
Clonality	Polyclonal
Isotype	IgG
Target Name	Presenilin 2 / PS2
Species	Human
Immunogen	Synthetic peptide of Human Presenilin 2 / PS2.
Conjugation	Un-conjugated
Alternate Names	AD4; AD5; EC 3.4.23.-; STM2; STM-2; AD3LP; Presenilin-2; CMD1V; PS2; AD3L; E5-1; PS-2

### Application Instructions

Application table	Application	Dilution
	ICC/IF	1:50 - 1:200
	WB	1:500 - 1:2000
Application Note	* The dilutions indicate recommended starting dilutions and the optimal dilutions or concentrations should be determined by the scientist.	

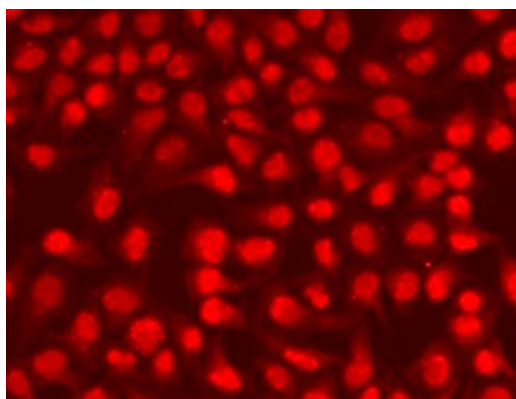
### Properties

Form	Liquid
Purification	Affinity purified.
Buffer	PBS (pH 7.3), 0.02% Sodium azide and 50% Glycerol.
Preservative	0.02% Sodium azide
Stabilizer	50% Glycerol
Storage instruction	For continuous use, store undiluted antibody at 2-8°C for up to a week. For long-term storage, aliquot and store at -20°C. Storage in frost free freezers is not recommended. Avoid repeated freeze/thaw cycles. Suggest spin the vial prior to opening. The antibody solution should be gently mixed before use.
Note	For laboratory research only, not for drug, diagnostic or other use.

### Bioinformation

Gene Symbol	PSEN2
Gene Full Name	presenilin 2
Background	Alzheimer's disease (AD) patients with an inherited form of the disease carry mutations in the presenilin proteins (PSEN1 or PSEN2) or the amyloid precursor protein (APP). These disease-linked mutations result in increased production of the longer form of amyloid-beta (main component of amyloid deposits found in AD brains). Presenilins are postulated to regulate APP processing through their effects on gamma-secretase, an enzyme that cleaves APP. Also, it is thought that the presenilins are involved in the cleavage of the Notch receptor such that, they either directly regulate gamma-secretase activity, or themselves act as protease enzymes. Two alternatively spliced transcript variants encoding different isoforms of PSEN2 have been identified. [provided by RefSeq, Jul 2008]
Function	Probable catalytic subunit of the gamma-secretase complex, an endoprotease complex that catalyzes the intramembrane cleavage of integral membrane proteins such as Notch receptors and APP (beta-amyloid precursor protein). Requires the other members of the gamma-secretase complex to have a protease activity. May play a role in intracellular signaling and gene expression or in linking chromatin to the nuclear membrane. May function in the cytoplasmic partitioning of proteins. [UniProt]
Calculated Mw	50 kDa
PTM	Heterogeneous proteolytic processing generates N-terminal and C-terminal fragments.  Phosphorylated on serine residues. [UniProt]
Cellular Localization	Endoplasmic reticulum membrane, Multi-pass membrane protein, Golgi apparatus membrane. [UniProt]

## Images



ARG57852 anti-Presenilin 2 / PS2 antibody ICC/IF image

Immunofluorescence: U2OS cells stained with ARG57852 anti-Presenilin 2 / PS2 antibody at 1:100 dilution.