

**ARG57905**  
**anti-SEPT8 antibody**Package: 100 µl  
Store at: -20°C**Summary**

Product Description	Rabbit Polyclonal antibody recognizes SEPT8
Tested Reactivity	Hu, Ms, Rat
Tested Application	ICC/IF, IHC-P, WB
Host	Rabbit
Clonality	Polyclonal
Isotype	IgG
Target Name	SEPT8
Species	Human
Immunogen	Recombinant fusion protein corresponding to aa. 348-427 of Human SEPT8 (NP_001287728.1).
Conjugation	Un-conjugated
Alternate Names	SEP2

**Application Instructions**

Application table	Application	Dilution
	ICC/IF	1:50 - 1:200
	IHC-P	1:50 - 1:200
	WB	1:500 - 1:2000
Application Note	* The dilutions indicate recommended starting dilutions and the optimal dilutions or concentrations should be determined by the scientist.	
Positive Control	HeLa	
Observed Size	54 kDa	

**Properties**

Form	Liquid
Purification	Affinity purified.
Buffer	PBS (pH 7.3), 0.02% Sodium azide and 50% Glycerol.
Preservative	0.02% Sodium azide
Stabilizer	50% Glycerol
Storage instruction	For continuous use, store undiluted antibody at 2-8°C for up to a week. For long-term storage, aliquot and store at -20°C. Storage in frost free freezers is not recommended. Avoid repeated freeze/thaw cycles. Suggest spin the vial prior to opening. The antibody solution should be gently mixed before use.

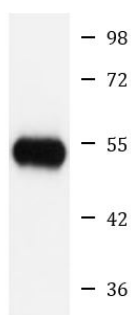
**Note**

For laboratory research only, not for drug, diagnostic or other use.

## Bioinformation

Gene Symbol	SEPT8
Gene Full Name	septin 8
Background	This gene is a member of the septin family of nucleotide binding proteins, originally described in yeast as cell division cycle regulatory proteins. Septins are highly conserved in yeast, Drosophila, and mouse, and appear to regulate cytoskeletal organization. Disruption of septin function disturbs cytokinesis and results in large multinucleate or polyploid cells. Multiple alternatively spliced transcript variants encoding different isoforms have been found for this gene. [provided by RefSeq, Jul 2014]
Function	Filament-forming cytoskeletal GTPase (By similarity). May play a role in cytokinesis (Potential). May play a role in platelet secretion. [UniProt]
Calculated Mw	56 kDa
Cellular Localization	Cytoplasm, cytoskeleton. [UniProt]

## Images



HeLa

ARG57905 anti-SEPT8 antibody WB image

Western blot: 25 µg of HeLa cell lysate stained with ARG57905 anti-SEPT8 antibody at 1:1000 dilution.