

## ARG57997 anti-CUX1 antibody

Package: 100 µl  
Store at: -20°C

### Summary

|                     |                                                                                                                                                                                      |
|---------------------|--------------------------------------------------------------------------------------------------------------------------------------------------------------------------------------|
| Product Description | Rabbit Polyclonal antibody recognizes CUX1                                                                                                                                           |
| Tested Reactivity   | Hu                                                                                                                                                                                   |
| Tested Application  | ICC/IF, WB                                                                                                                                                                           |
| Host                | Rabbit                                                                                                                                                                               |
| Clonality           | Polyclonal                                                                                                                                                                           |
| Isotype             | IgG                                                                                                                                                                                  |
| Target Name         | CUX1                                                                                                                                                                                 |
| Species             | Human                                                                                                                                                                                |
| Immunogen           | KLH-conjugated synthetic peptide corresponding to aa. 1347-1374 (C-terminus) of Human CUX1.                                                                                          |
| Conjugation         | Un-conjugated                                                                                                                                                                        |
| Alternate Names     | Homeobox protein cut-like 1; CUTL1; p110; p75; GOLIM6; p100; Homeobox protein cux-1; CUX; CDP1; Cux/CDP; COY1; CASP; p200; Nbla10317; CDP; Clox; CCAAT displacement protein; CDP/Cut |

### Application Instructions

|                   |                                                                                                                                            |                 |
|-------------------|--------------------------------------------------------------------------------------------------------------------------------------------|-----------------|
| Application table | Application                                                                                                                                | Dilution        |
|                   | ICC/IF                                                                                                                                     | 1:25            |
|                   | WB                                                                                                                                         | 1:1000 - 1:2000 |
| Application Note  | * The dilutions indicate recommended starting dilutions and the optimal dilutions or concentrations should be determined by the scientist. |                 |
| Positive Control  | MOLT-4                                                                                                                                     |                 |

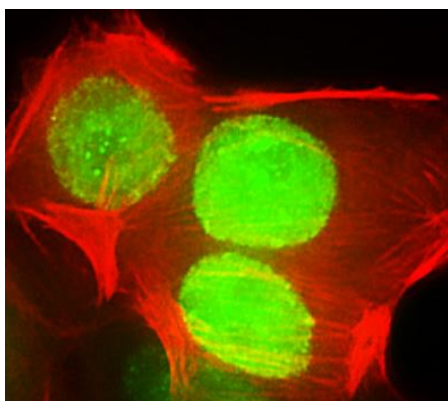
### Properties

|                     |                                                                                                                                                                                                                                                                                                                            |
|---------------------|----------------------------------------------------------------------------------------------------------------------------------------------------------------------------------------------------------------------------------------------------------------------------------------------------------------------------|
| Form                | Liquid                                                                                                                                                                                                                                                                                                                     |
| Purification        | Purification with Protein A and immunogen peptide.                                                                                                                                                                                                                                                                         |
| Buffer              | PBS and 0.09% (W/V) Sodium azide.                                                                                                                                                                                                                                                                                          |
| Preservative        | 0.09% (W/V) Sodium azide.                                                                                                                                                                                                                                                                                                  |
| Storage instruction | For continuous use, store undiluted antibody at 2-8°C for up to a week. For long-term storage, aliquot and store at -20°C or below. Storage in frost free freezers is not recommended. Avoid repeated freeze/thaw cycles. Suggest spin the vial prior to opening. The antibody solution should be gently mixed before use. |
| Note                | For laboratory research only, not for drug, diagnostic or other use.                                                                                                                                                                                                                                                       |

## Bioinformation

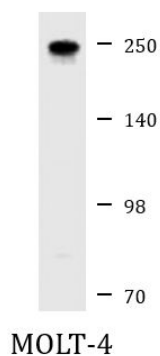
|                       |                                                                                                                                                                                                                                                                                                                                                                  |
|-----------------------|------------------------------------------------------------------------------------------------------------------------------------------------------------------------------------------------------------------------------------------------------------------------------------------------------------------------------------------------------------------|
| Gene Symbol           | CUX1                                                                                                                                                                                                                                                                                                                                                             |
| Gene Full Name        | cut-like homeobox 1                                                                                                                                                                                                                                                                                                                                              |
| Background            | The protein encoded by this gene is a member of the homeodomain family of DNA binding proteins. It may regulate gene expression, morphogenesis, and differentiation and it may also play a role in the cell cycle progression. Several alternatively spliced transcript variants encoding different isoforms have been identified.[provided by RefSeq, Feb 2011] |
| Function              | May be involved in intra-Golgi retrograde transport. [UniProt]                                                                                                                                                                                                                                                                                                   |
| Calculated Mw         | 77 kDa                                                                                                                                                                                                                                                                                                                                                           |
| PTM                   | Disulfide bond, Phosphoprotein. [UniProt]                                                                                                                                                                                                                                                                                                                        |
| Cellular Localization | Nucleus. [UniProt]                                                                                                                                                                                                                                                                                                                                               |

## Images



ARG57997 anti-CUX1 antibody ICC/IF image

Immunofluorescence: 4% paraformaldehyde-fixed, 0.1% Triton X-100 permeabilized MCF7 cells stained with ARG57997 anti-CUX1 antibody (green) at 1:25 dilution. Cytoplasmic actin is detected with Dylight® 554 Phalloidin (red) at 1:100 dilution.



ARG57997 anti-CUX1 antibody WB image

Western blot: 20 µg of MOLT-4 cell lysate stained with ARG57997 anti-CUX1 antibody at 1:2000 dilution.