

ARG58028 anti-MALT1 antibody [MT1/410]

Package: 50 µg
Store at: -20°C

Summary

Product Description	Mouse Monoclonal antibody [MT1/410] recognizes MALT1
Tested Reactivity	Hu
Tested Application	IHC-P, WB
Host	Mouse
Clonality	Monoclonal
Clone	MT1/410
Isotype	IgG1, kappa
Target Name	MALT1
Species	Human
Immunogen	Recombinant fragment corresponding to aa. 701-808 of Human MALT1.
Conjugation	Un-conjugated
Alternate Names	MALT lymphoma-associated translocation; Paracaspase; MLT1; MLT; EC 3.4.22.-; Mucosa-associated lymphoid tissue lymphoma translocation protein 1; IMD12

Application Instructions

Application table	Application	Dilution
	IHC-P	2 - 5 µg/ml
	WB	1 - 2 µg/ml
Application Note	<p>IHC-P: Antigen Retrieval: Boil tissue section in 10 mM Citrate buffer (pH 6.0) for 10-20 min, followed by cooling at RT for 20 min.</p> <p>* The dilutions indicate recommended starting dilutions and the optimal dilutions or concentrations should be determined by the scientist.</p>	

Properties

Form	Liquid
Purification	Purification with Protein G.
Buffer	PBS (pH 7.4), 0.05% Sodium azide and 0.1 mg/ml BSA.
Preservative	0.05% Sodium azide
Stabilizer	0.1 mg/ml BSA
Concentration	0.2 mg/ml
Storage instruction	For continuous use, store undiluted antibody at 2-8°C for up to a week. For long-term storage, aliquot and store at -20°C or below. Storage in frost free freezers is not recommended. Avoid repeated freeze/thaw cycles. Suggest spin the vial prior to opening. The antibody solution should be gently mixed

before use.

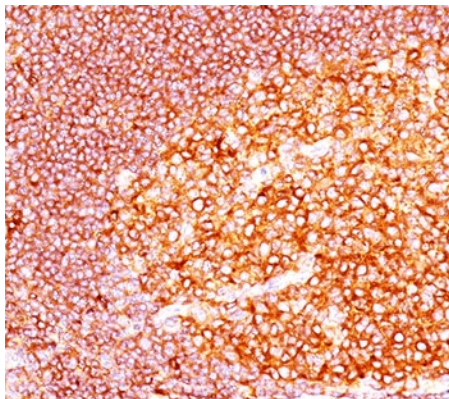
Note

For laboratory research only, not for drug, diagnostic or other use.

Bioinformation

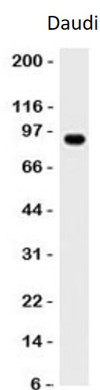
Gene Symbol	MALT1
Gene Full Name	MALT1 paracaspase
Background	This gene has been found to be recurrently rearranged in chromosomal translocation with two other genes - baculoviral IAP repeat-containing protein 3 (also known as apoptosis inhibitor 2) and immunoglobulin heavy chain locus - in mucosa-associated lymphoid tissue lymphomas. The protein encoded by this gene may play a role in NF-kappaB activation. Two alternatively spliced transcript variants encoding different isoforms have been described for this gene. [provided by RefSeq, Jul 2008]
Function	Enhances BCL10-induced activation of NF-kappa-B. Involved in nuclear export of BCL10. Binds to TRAF6, inducing TRAF6 oligomerization and activation of its ligase activity. Has ubiquitin ligase activity. MALT1-dependent BCL10 cleavage plays an important role in T-cell antigen receptor-induced integrin adhesion. [UniProt]
Calculated Mw	92 kDa

Images



ARG58028 anti-MALT1 antibody [MT1/410] IHC-P image

Immunohistochemistry: Paraffin-embedded Human tonsil stained with ARG58028 anti-MALT1 antibody [MT1/410].



ARG58028 anti-MALT1 antibody [MT1/410] WB image

Western blot: Daudi cell lysate stained with ARG58028 anti-MALT1 antibody [MT1/410].