

## ARG58124 anti-Stanniocalcin 2 antibody

Package: 100 µl  
Store at: -20°C

### Summary

Product Description	Rabbit Polyclonal antibody recognizes Stanniocalcin 2
Tested Reactivity	Hu, Ms
Predict Reactivity	Rat
Tested Application	IHC-P, WB
Host	Rabbit
Clonality	Polyclonal
Isotype	IgG
Target Name	Stanniocalcin 2
Species	Human
Immunogen	KLH-conjugated synthetic peptide corresponding to aa. 273-302 (C-terminus) of Human Stanniocalcin 2.
Conjugation	Un-conjugated
Alternate Names	STC-related protein; Stanniocalcin-2; STC-2; Stanniocalcin-related protein; STCRP

### Application Instructions

Application table	Application	Dilution
	IHC-P	1:10 - 1:50
	WB	1:1000
Application Note	* The dilutions indicate recommended starting dilutions and the optimal dilutions or concentrations should be determined by the scientist.	
Positive Control	Mouse heart	

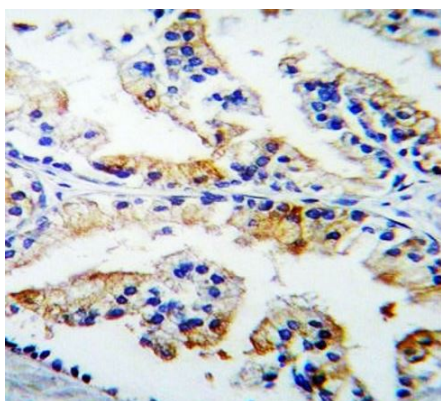
### Properties

Form	Liquid
Purification	Purification with Protein A and immunogen peptide.
Buffer	PBS and 0.09% (W/V) Sodium azide.
Preservative	0.09% (W/V) Sodium azide.
Storage instruction	For continuous use, store undiluted antibody at 2-8°C for up to a week. For long-term storage, aliquot and store at -20°C or below. Storage in frost free freezers is not recommended. Avoid repeated freeze/thaw cycles. Suggest spin the vial prior to opening. The antibody solution should be gently mixed before use.
Note	For laboratory research only, not for drug, diagnostic or other use.

## Bioinformation

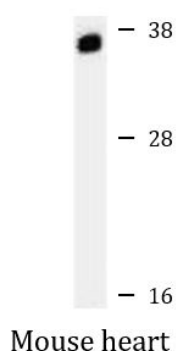
Gene Symbol	STC2
Gene Full Name	stanniocalcin 2
Background	This gene encodes a secreted, homodimeric glycoprotein that is expressed in a wide variety of tissues and may have autocrine or paracrine functions. The encoded protein has 10 of its 15 cysteine residues conserved among stanniocalcin family members and is phosphorylated by casein kinase 2 exclusively on its serine residues. Its C-terminus contains a cluster of histidine residues which may interact with metal ions. The protein may play a role in the regulation of renal and intestinal calcium and phosphate transport, cell metabolism, or cellular calcium/phosphate homeostasis. Constitutive overexpression of human stanniocalcin 2 in mice resulted in pre- and postnatal growth restriction, reduced bone and skeletal muscle growth, and organomegaly. Expression of this gene is induced by estrogen and altered in some breast cancers. [provided by RefSeq, Jul 2008]
Function	Has an anti-hypocalcemic action on calcium and phosphate homeostasis. [UniProt]
Calculated Mw	33 kDa
Cellular Localization	Secreted. [UniProt]

## Images



ARG58124 anti-Stanniocalcin 2 antibody IHC-P image

Immunohistochemistry: Formalin-fixed and paraffin-embedded Human prostate tissue stained with ARG58124 anti-Stanniocalcin 2 antibody.



ARG58124 anti-Stanniocalcin 2 antibody WB image

Western blot: 35 µg of Mouse heart lysate stained with ARG58124 anti-Stanniocalcin 2 antibody.