

ARG58177 anti-ALP / Alkaline Phosphatase antibody

Package: 100 µl
Store at: -20°C

Summary

Product Description	Rabbit Polyclonal antibody recognizes ALP / Alkaline Phosphatase
Tested Reactivity	Hu
Tested Application	ICC/IF, IHC-P, WB
Host	Rabbit
Clonality	Polyclonal
Isotype	IgG
Target Name	ALP / Alkaline Phosphatase
Species	Human
Immunogen	KLH-conjugated synthetic peptide corresponding to aa. 274-304 of Human ALP / Alkaline Phosphatase.
Conjugation	Un-conjugated
Alternate Names	Intestinal-type alkaline phosphatase; EC 3.1.3.1; IAP; Intestinal alkaline phosphatase

Application Instructions

Application table	Application	Dilution
	ICC/IF	1:100
	IHC-P	1:100
	WB	1:1000
Application Note	* The dilutions indicate recommended starting dilutions and the optimal dilutions or concentrations should be determined by the scientist.	
Positive Control	Human placenta	

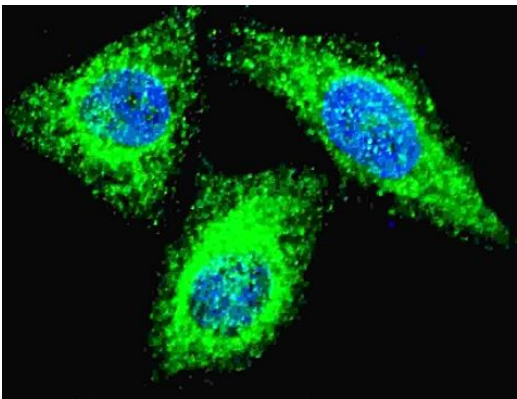
Properties

Form	Liquid
Purification	Purification with Protein A.
Buffer	PBS and 0.09% (W/V) Sodium azide.
Preservative	0.09% (W/V) Sodium azide.
Storage instruction	For continuous use, store undiluted antibody at 2-8°C for up to a week. For long-term storage, aliquot and store at -20°C or below. Storage in frost free freezers is not recommended. Avoid repeated freeze/thaw cycles. Suggest spin the vial prior to opening. The antibody solution should be gently mixed before use.
Note	For laboratory research only, not for drug, diagnostic or other use.

Bioinformation

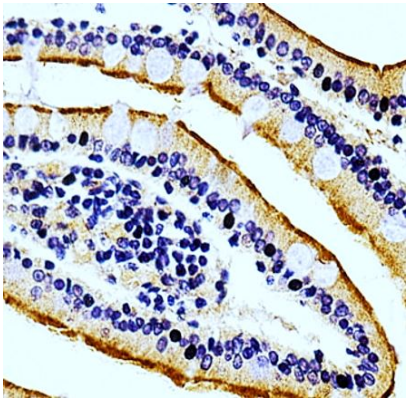
Gene Symbol	ALPI
Gene Full Name	alkaline phosphatase, intestinal
Background	There are at least four distinct but related alkaline phosphatases: intestinal, placental, placental-like, and liver/bone/kidney (tissue non-specific). The intestinal alkaline phosphatase gene encodes a digestive brush-border enzyme. This enzyme is a component of the gut mucosal defense system and is thought to function in the detoxification of lipopolysaccharide, and in the prevention of bacterial translocation in the gut. [provided by RefSeq, Dec 2014]
Calculated Mw	57 kDa
Cellular Localization	Cell membrane; Lipid-anchor, GPI-anchor. [UniProt]

Images



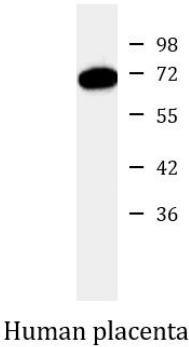
ARG58177 anti-ALP / Alkaline Phosphatase antibody ICC/IF image

Immunofluorescence: HeLa cells were fixed with 4% PFA (20 min), permeabilized with Triton X-100 (0.2%, 30 min). Cells were stained with ARG58177 anti-ALP / Alkaline Phosphatase antibody (green) at 1:100 dilution, 2 hours at RT. Nuclei were counterstained with Hoechst 33342 (blue) (10 µg/ml, 5 min).



ARG58177 anti-ALP / Alkaline Phosphatase antibody IHC-P image

Immunohistochemistry: Paraffin-embedded Human small intestine tissue stained with ARG58177 anti-ALP / Alkaline Phosphatase antibody at 1:100 dilution.



ARG58177 anti-ALP / Alkaline Phosphatase antibody WB image

Western blot: 20 µg of Human placenta lysate stained with ARG58177 anti-ALP / Alkaline Phosphatase antibody at 1:1000 dilution.