

ARG58184 anti-LRP1 antibody

Package: 100 µl
Store at: -20°C

Summary

Product Description	Rabbit Polyclonal antibody recognizes LRP1
Tested Reactivity	Hu, Ms, Rat
Tested Application	FACS, ICC/IF, IHC-P, IP, WB
Host	Rabbit
Clonality	Polyclonal
Isotype	IgG
Target Name	LRP1
Species	Human
Immunogen	Synthetic peptide derived from Human LRP1.
Conjugation	Un-conjugated
Alternate Names	Apolipoprotein E receptor; APOER; Alpha-2-macroglobulin receptor; LRP-1; TGFBR5; LRP1A; APR; Prolow-density lipoprotein receptor-related protein 1; A2MR; CD antigen CD91; CD91; IGFBP3R; LRP; LRP-85; LRPICD; LRP-515

Application Instructions

Application table	Application	Dilution
	FACS	1:50
	ICC/IF	1:50 - 1:100
	IHC-P	1:50 - 1:100
	IP	1:30
	WB	1:10000 - 1:20000
Application Note	* The dilutions indicate recommended starting dilutions and the optimal dilutions or concentrations should be determined by the scientist.	
Positive Control	HeLa	

Properties

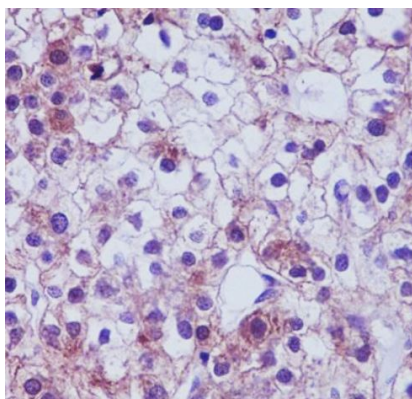
Form	Liquid
Purification	Affinity purified.
Buffer	PBS (pH 7.4), 0.02% Sodium azide and 50% Glycerol.
Preservative	0.02% Sodium azide
Stabilizer	50% Glycerol

Storage instruction	For continuous use, store undiluted antibody at 2-8°C for up to a week. For long-term storage, aliquot and store at -20°C. Storage in frost free freezers is not recommended. Avoid repeated freeze/thaw cycles. Suggest spin the vial prior to opening. The antibody solution should be gently mixed before use.
Note	For laboratory research only, not for drug, diagnostic or other use.

Bioinformation

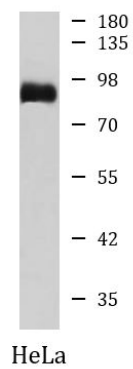
Gene Symbol	LRP1
Gene Full Name	low density lipoprotein receptor-related protein 1
Background	The protein encoded by this gene is an endocytic receptor involved in several cellular processes, including intracellular signaling, lipid homeostasis, and clearance of apoptotic cells. In addition, the encoded protein is necessary for the A2M-mediated clearance of secreted amyloid precursor protein and beta-amyloid, the main component of amyloid plaques found in Alzheimer patients. Expression of this gene decreases with age and has been found to be lower than controls in brain tissue from Alzheimer patients. [provided by RefSeq, Jan 2010]
Function	<p>Endocytic receptor involved in endocytosis and in phagocytosis of apoptotic cells. Required for early embryonic development. Involved in cellular lipid homeostasis. Involved in the plasma clearance of chylomicron remnants and activated LRPAP1 (alpha 2-macroglobulin), as well as the local metabolism of complexes between plasminogen activators and their endogenous inhibitors. May modulate cellular events, such as APP metabolism, kinase-dependent intracellular signaling, neuronal calcium signaling as well as neurotransmission.</p> <p>Functions as a receptor for <i>Pseudomonas aeruginosa</i> exotoxin A. [UniProt]</p>
Calculated Mw	505 kDa
PTM	<p>Cleaved into a 85 kDa membrane-spanning subunit (LRP-85) and a 515 kDa large extracellular domain (LRP-515) that remains non-covalently associated. Gamma-secretase-dependent cleavage of LRP-85 releases the intracellular domain from the membrane.</p> <p>The N-terminus is blocked.</p> <p>Phosphorylated on serine and threonine residues.</p> <p>Phosphorylated on tyrosine residues upon stimulation with PDGF. Tyrosine phosphorylation promotes interaction with SHC1. [UniProt]</p>
Cellular Localization	Cell surface. [UniProt]

Images



ARG58184 anti-LRP1 antibody IHC-P image

Immunohistochemistry: Paraffin-embedded Human liver carcinoma stained with ARG58184 anti-LRP1 antibody.



ARG58184 anti-LRP1 antibody WB image

Western blot: HeLa cell lysate stained with ARG58184 anti-LRP1 antibody.