

ARG58198 anti-CD166 antibody

Package: 100 µl
Store at: -20°C

Summary

Product Description	Rabbit Polyclonal antibody recognizes CD166
Tested Reactivity	Hu, Ms, Rat
Tested Application	FACS, ICC/IF, IHC-P, IP, WB
Host	Rabbit
Clonality	Polyclonal
Isotype	IgG
Target Name	CD166
Species	Human
Immunogen	Synthetic peptide derived from Human CD166.
Conjugation	Un-conjugated
Alternate Names	MEMD; CD166 antigen; CD antigen CD166; Activated leukocyte cell adhesion molecule; CD166

Application Instructions

Application table	Application	Dilution
	FACS	1:60
	ICC/IF	1:50 - 1:200
	IHC-P	1:50 - 1:200
	IP	1:40
	WB	1:1000 - 1:5000
	* The dilutions indicate recommended starting dilutions and the optimal dilutions or concentrations should be determined by the scientist.	
Application Note		
Positive Control	Daudi	
Observed Size	~ 96 kDa	

Properties

Form	Liquid
Purification	Affinity purified.
Buffer	PBS (pH 7.4), 150mM NaCl, 0.02% Sodium azide and 50% Glycerol.
Preservative	0.02% Sodium azide
Stabilizer	50% Glycerol
Storage instruction	For continuous use, store undiluted antibody at 2-8°C for up to a week. For long-term storage, aliquot

and store at -20°C. Storage in frost free freezers is not recommended. Avoid repeated freeze/thaw cycles. Suggest spin the vial prior to opening. The antibody solution should be gently mixed before use.

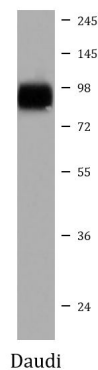
Note

For laboratory research only, not for drug, diagnostic or other use.

Bioinformation

Gene Symbol	ALCAM
Gene Full Name	activated leukocyte cell adhesion molecule
Background	This gene encodes activated leukocyte cell adhesion molecule (ALCAM), also known as CD166 (cluster of differentiation 166), which is a member of a subfamily of immunoglobulin receptors with five immunoglobulin-like domains (VVC2C2C2) in the extracellular domain. This protein binds to T-cell differentiation antigene CD6, and is implicated in the processes of cell adhesion and migration. Multiple alternatively spliced transcript variants encoding different isoforms have been found. [provided by RefSeq, Aug 2011]
Function	Cell adhesion molecule that binds to CD6. Involved in neurite extension by neurons via heterophilic and homophilic interactions. May play a role in the binding of T- and B-cells to activated leukocytes, as well as in interactions between cells of the nervous system. [UniProt]
Calculated Mw	65 kDa
PTM	Glycosylated. [UniProt]

Images



ARG58198 anti-CD166 antibody WB image

Western blot: Daudi cell lysate stained with ARG58198 anti-CD166 antibody.