

## ARG58252 anti-alpha amylase antibody

Package: 100 µl  
Store at: -20°C

### Summary

Product Description	Rabbit Polyclonal antibody recognizes alpha amylase
Tested Reactivity	Hu, Ms, Rat
Tested Application	ICC/IF, WB
Host	Rabbit
Clonality	Polyclonal
Isotype	IgG
Target Name	alpha amylase
Species	Human
Immunogen	Recombinant fusion protein corresponding to aa. 242-511 of Human alpha amylase (NP_000690.1).
Conjugation	Un-conjugated
Alternate Names	1,4-alpha-D-glucan glucanohydrolase 1; Salivary alpha-amylase; AMY1; EC 3.2.1.1; Alpha-amylase 1; PA; AMY2; HXA; AMY2; AMY3

### Application Instructions

Application table	Application	Dilution
	ICC/IF	1:50 - 1:200
	WB	1:500 - 1:2000
Application Note	* The dilutions indicate recommended starting dilutions and the optimal dilutions or concentrations should be determined by the scientist.	
Positive Control	Rat intestine	
Observed Size	50 kDa	

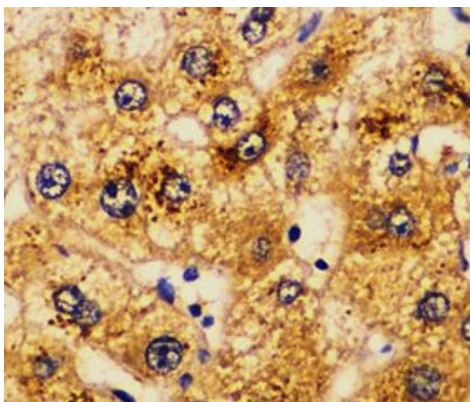
### Properties

Form	Liquid
Purification	Affinity purified.
Buffer	PBS (pH 7.3), 0.02% Sodium azide and 50% Glycerol.
Preservative	0.02% Sodium azide
Stabilizer	50% Glycerol
Storage instruction	For continuous use, store undiluted antibody at 2-8°C for up to a week. For long-term storage, aliquot and store at -20°C. Storage in frost free freezers is not recommended. Avoid repeated freeze/thaw cycles. Suggest spin the vial prior to opening. The antibody solution should be gently mixed before use.
Note	For laboratory research only, not for drug, diagnostic or other use.

Bioinformation

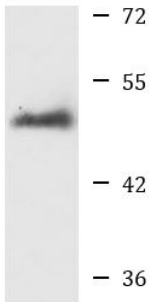
Gene Symbol	AMY1A; AMY2A; AMY2B
Gene Full Name	amylase, alpha 1A (salivary); amylase, alpha 2A (pancreatic); amylase, alpha 2B (pancreatic)
Background	Amylases are secreted proteins that hydrolyze 1,4-alpha-glucoside bonds in oligosaccharides and polysaccharides, and thus catalyze the first step in digestion of dietary starch and glycogen. The human genome has a cluster of several amylase genes that are expressed at high levels in either salivary gland or pancreas. This gene encodes an amylase isoenzyme produced by the salivary gland. Alternative splicing results in multiple transcript variants encoding the same protein. [provided by RefSeq, Jul 2008]
Calculated Mw	58 kDa
Cellular Localization	Secreted. [UniProt]

Images



ARG58252 anti-alpha amylase antibody IHC-P image

Immunohistochemistry: Paraffin-embedded Human liver injury stained with ARG58252 anti-alpha amylase antibody at 1:100 dilution.



Rat intestine

ARG58252 anti-alpha amylase antibody WB image

Western blot: 25 µg of Rat intestine lysate stained with ARG58252 anti-alpha amylase antibody at 1:1000 dilution.