

ARG58297 anti-ATP4B antibody

Package: 50 µg
Store at: -20°C

Summary

Product Description	Rabbit Polyclonal antibody recognizes ATP4B
Tested Reactivity	Hu, Ms, Rat
Tested Application	WB
Host	Rabbit
Clonality	Polyclonal
Isotype	IgG
Target Name	ATP4B
Species	Human
Immunogen	Synthetic peptide corresponding to a sequence at the N-terminus of Human ATP4B (1-28aa MAALQEKKTCGQRMEEFQRYCWNPDGQ), different from the related Mouse and Rat sequences by five amino acids.
Conjugation	Un-conjugated
Alternate Names	Gastric H; +; Proton pump beta chain; ATP6B; Potassium-transporting ATPase subunit beta

Application Instructions

Application table	Application	Dilution
	WB	0.1 - 0.5 µg/ml
Application Note	* The dilutions indicate recommended starting dilutions and the optimal dilutions or concentrations should be determined by the scientist.	

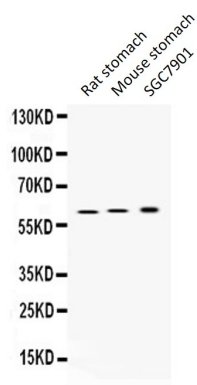
Properties

Form	Liquid
Purification	Affinity purification with immunogen.
Buffer	0.9% NaCl, 0.2% Na ₂ HPO ₄ , 0.05% Sodium azide and 5% BSA.
Preservative	0.05% Sodium azide
Stabilizer	5% BSA
Concentration	0.5 mg/ml
Storage instruction	For continuous use, store undiluted antibody at 2-8°C for up to a week. For long-term storage, aliquot and store at -20°C or below. Storage in frost free freezers is not recommended. Avoid repeated freeze/thaw cycles. Suggest spin the vial prior to opening. The antibody solution should be gently mixed before use.
Note	For laboratory research only, not for drug, diagnostic or other use.

Bioinformation

Gene Symbol	ATP4B
Gene Full Name	ATPase, H ⁺ /K ⁺ exchanging, beta polypeptide
Background	The protein encoded by this gene belongs to a family of P-type cation-transporting ATPases. The gastric H ⁺ , K ⁺ -ATPase is a heterodimer consisting of a high molecular weight catalytic alpha subunit and a smaller but heavily glycosylated beta subunit. This enzyme is a proton pump that catalyzes the hydrolysis of ATP coupled with the exchange of H(+) and K(+) ions across the plasma membrane. It is also responsible for gastric acid secretion. This gene encodes the beta subunit of the gastric H ⁺ , K ⁺ -ATPase. [provided by RefSeq, Jul 2008]
Function	Required for stabilization and maturation of the catalytic proton pump alpha subunit and may also involved in cell adhesion and establishing epithelial cell polarity. [UniProt]
Calculated Mw	33 kDa
Cellular Localization	Cell membrane; Single-pass type II membrane protein. [UniProt]

Images



ARG58297 anti-ATP4B antibody WB image

Western blot: Rat stomach extract, Mouse stomach extract and SGC7901 whole cell lysates stained with ARG58297 anti-ATP4B antibody at 0.5 µg/ml dilution.